



# PREFA FAÇADE SYSTEMS

PLANNING GUIDE



# CONTENTS

---



The planning guide shows examples of the different PREFA products and PREFA Aluminiumprodukte GmbH accessories in various scenarios. The planning guide is by no means an exhaustive list of all the details or implementation options, and is not meant to be understood as planning or installation guidelines.

Visit [www.prefa.com](http://www.prefa.com) where you can find a comprehensive description of the details next to each respective product. National standards and guidelines may stipulate other designs and must be taken into account.

3-4	<b>RAINSCREEN</b>
5	<b>SUPPORTING SUBSTRATE — GENERAL INFORMATION</b>
6	ALUMINIUM SUPPORTING SUBSTRATE
7	TIMBER/TIMBER-ALUMINIUM SUPPORTING SUBSTRATE
8	<b>PRODUCT OVERVIEW — FAÇADE SYSTEMS</b>
9-15	SIDING, SIDING.X
16-25	<b>PREFABOND ALUMINIUM COMPOSITE PANEL</b>
26-32	EXTRUDED PROFILES
33-39	RHOMBOID FAÇADE TILE 20 × 20   29 × 29   44 × 44 — FAÇADE SHINGLE
40-43	FX.12 FAÇADE PANEL
44-50	<b>PREFALZ</b>

# RAINSCREEN

---

## THE RAINSCREEN — A BRIEF EXPLANATION

---

It's not without good reason that the façade cladding system known as the "rainscreen" or "ventilated façade" has been used for centuries in harsh climates.

A characteristic feature of the rainscreen is the structurally optimized air cavity which separates the weatherproof outer layer from the insulation. Any moisture is channelled through this cavity, ensuring a comfortable indoor climate.

Further major advantages of the rainscreen system are the virtually limitless creative freedom that it offers, and the particularly long service life that it brings to façades.

## HOW THE RAINSCREEN CLADDING SYSTEM WORKS

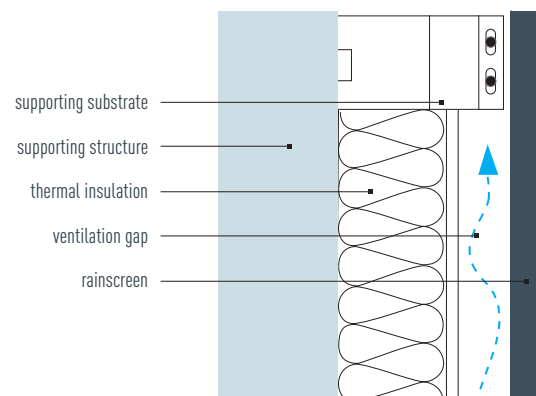
---

Basically, the rainscreen cladding system consists of four components: the supporting structure, thermal insulation, supporting substrate and rainscreen.

The thermal insulation reduces heat flow from the inside to the outside and vice versa, while also acting as sound insulation. In addition, the thermal insulation, which is generally made of mineral materials, varies in thickness (depending on the thermal performance to be achieved), and is protected from external weather conditions.

The rainscreen support system forms the connection between the structural wall and the façade cladding. A metal rainscreen support makes it possible to compensate for any unevenness in the structural wall in a way which is free of stress and in the long term.

The rainscreen cladding system serves, on the one hand, as rain and weather protection for the structural wall, and, on the other, as a design element on new builds and renovated properties.



# BUILDING PHYSICS REQUIREMENTS FOR RAINSCREENS

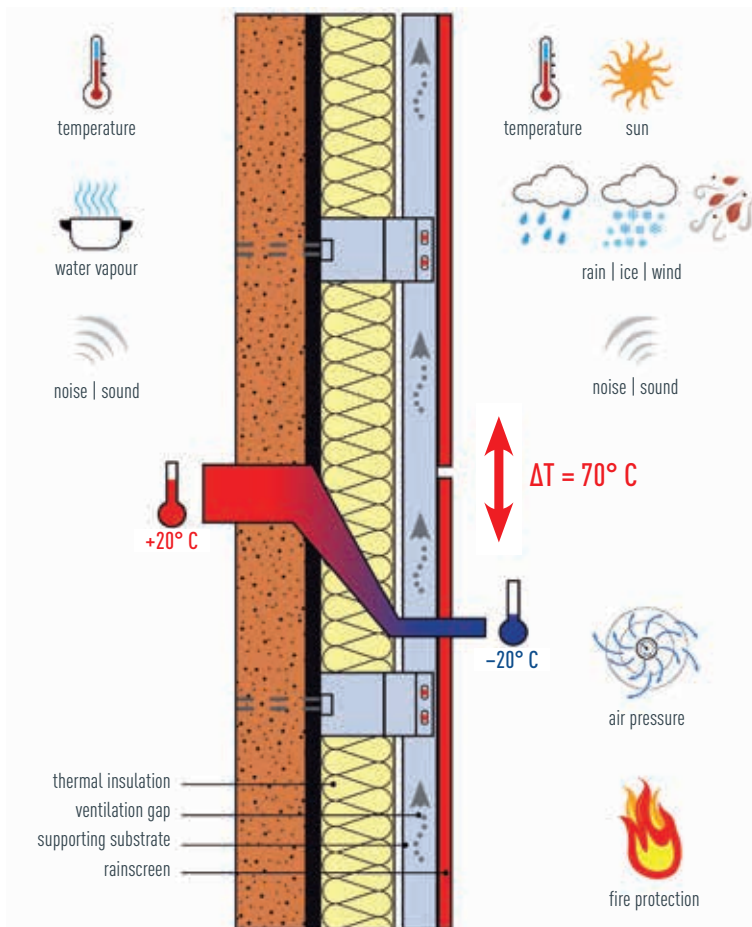
The role of the ventilation gap is to keep the construction dry by ensuring a continuous flow of air through the ventilated cavity between the insulated supporting structure and the façade cladding. Any water vapour or moisture generated by the construction materials or living spaces is dissipated outside.

Open joints in the façade cladding create an additional means for water vapour to escape outside.

In terms of buildings physics, the major benefit of a rainscreen cladding system is that it keeps out the cold in the winter and the heat in the summer.

By correctly dimensioning the ventilation gap, which evacuates the heat in the summer through the constant flow of air, the heat load is kept away from indoor areas. This clearly demonstrates that exterior walls with rainscreens also ensure a far more pleasant indoor climate.

An important aspect of rainscreens from an environmental point of view is that they can be easily dismantled which means that individual components can be replaced or recycled at the end of their service life.



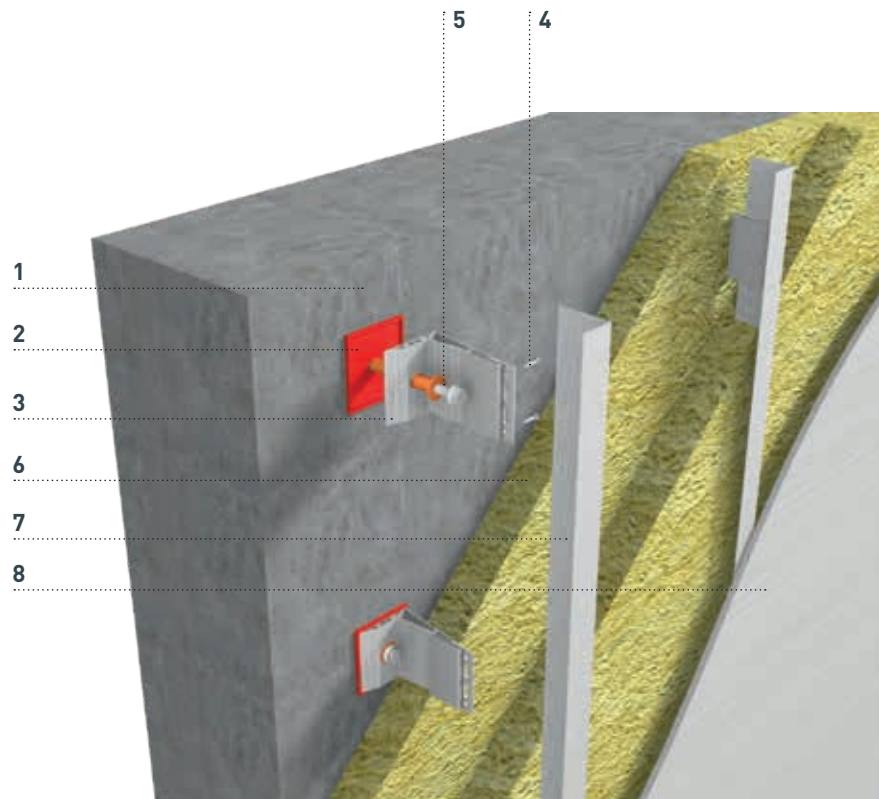
# SUPPORTING SUBSTRATE — GENERAL INFORMATION

## SUPPORTING SUBSTRATE — GENERAL INFORMATION

The supporting substrate forms the static connection between the supporting structure and the façade cladding. Basically, the supporting substrate is made up of thermal breaks, spacer brackets which separate the façade cladding from the supporting structure, and support profiles, fastened to the supporting structure, for mounting the façade cladding.

The materials used for the supporting substrate are metal (aluminium) and timber, or a combination of both.

The way in which the supporting substrate is fastened depends on the type of substrate and the loads encountered. The support profiles are fastened to the spacer brackets via fixed points or sliding points.



- 1 supporting structure
- 2 thermal break
- 3 spacer bracket (wall angle bracket)
- 4 fasteners
- 5 anchoring element (dowel + screw)
- 6 insulation
- 7 support profile
- 8 façade cladding

# ALUMINIUM SUPPORTING SUBSTRATE

## SLIDING POINT DESIGN — ALUMINIUM SUPPORTING SUBSTRATE

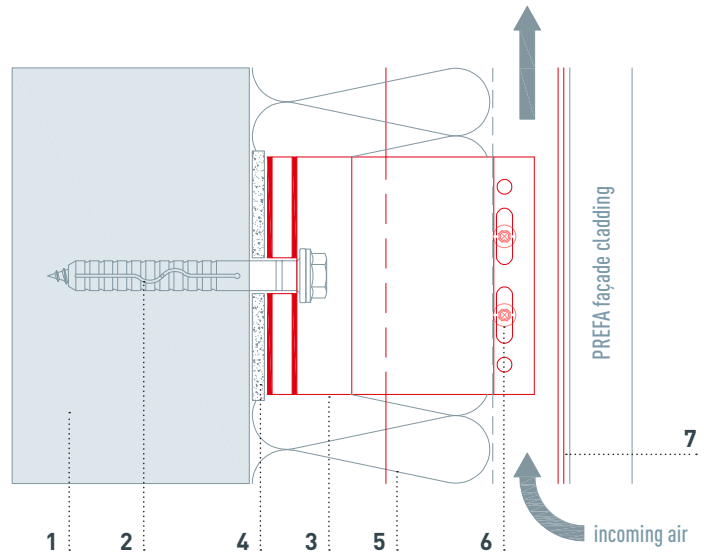
- 1 supporting structure
- 2 fastener driven into the supporting structure
- 3 spacer bracket
- 4 thermal break
- 5 insulation
- 6 connection screw
- 7 support profile

Basically, the supporting substrate profiles must be mounted at intervals of 3 m to compensate for any changes in length. Larger intervals are permitted provided that adequate measures are taken to ensure that changes in length can be accommodated without damage.

For building physics reasons, spacer brackets with thermal breaks should be mounted to prevent the flow of thermal energy.

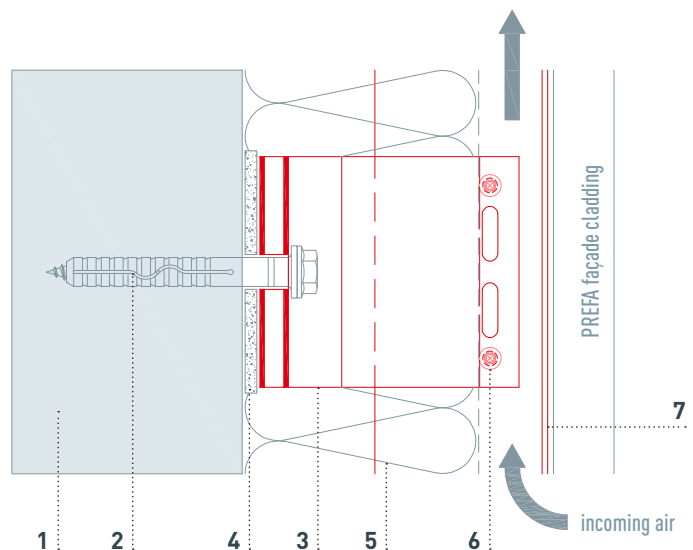
The supporting substrate must be mounted via fixed points and sliding points so that the loads and any thermally-induced changes in length can be accommodated without damage.

Screws must be used to fasten the support profiles to the spacer brackets. Sliding points must be mounted free of stress.



## FIXED POINT DESIGN — ALUMINIUM SUPPORTING SUBSTRATE

- 1 supporting structure
- 2 fastener driven into the supporting structure
- 3 spacer bracket
- 4 thermal break
- 5 insulation
- 6 connection screw
- 7 support profile



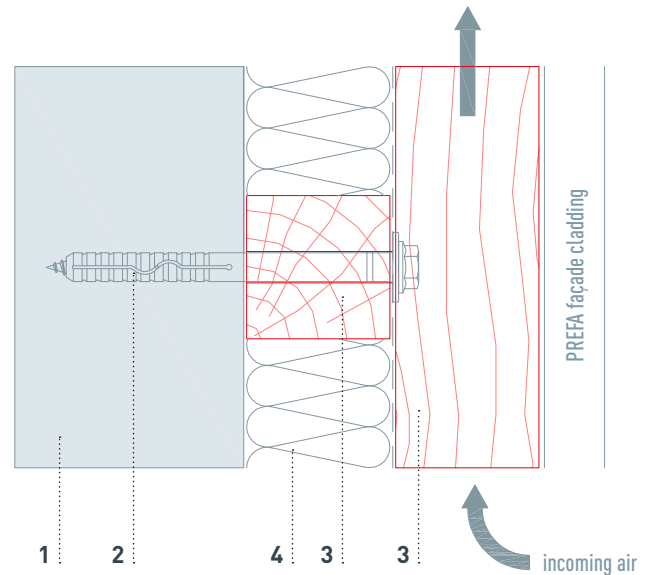
# TIMBER/TIMBER-ALUMINIUM SUPPORTING SUBSTRATE

## TIMBER SUPPORTING SUBSTRATE

- 1 supporting structure
- 2 fastener driven into the supporting structure
- 3 square timber
- 4 insulation

Generally speaking, supporting substrates made of timber are composed of skip sheathing which separates the façade cladding from the supporting structure, and of counter battens fastened to the supporting structure, together with their associated fasteners. The battens must be interconnected by means of suitable corrosion-resistant screws. The thermal break can be omitted on 100% timber supporting substrates.

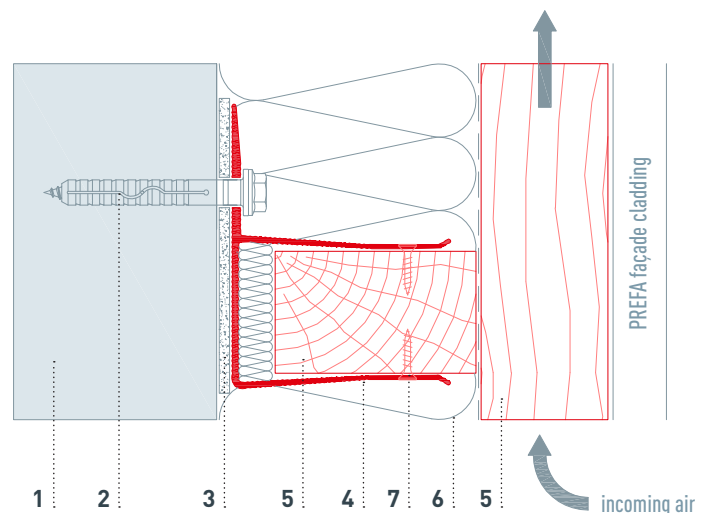
Due to the low longitudinal expansion of wood, fixed points and sliding points on the supporting substrate can also be omitted.



## ALUMINIUM AND TIMBER SUPPORTING SUBSTRATE

- 1 supporting structure
- 2 fastener driven into the supporting structure
- 3 thermal break
- 4 spacer bracket
- 5 square timber
- 6 insulation
- 7 fixing screw

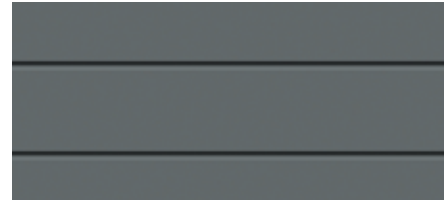
It is also possible to use a supporting substrate composed of a combination of aluminium and timber. With this version, a thermal break should be used under the aluminium spacer bracket to prevent the flow of thermal energy. With this combination, the spacer bracket takes on the role of the battens. In this case too, due to the low longitudinal expansion of wood, the sliding points can be omitted. The advantage of this version is that it compensates better for any wall unevenness.



# PRODUCT OVERVIEW — FAÇADE SYSTEMS

---

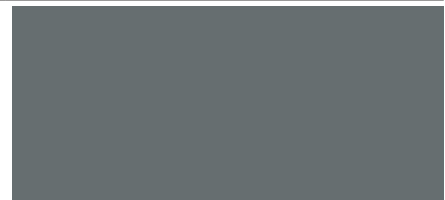
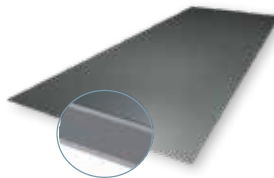
**SIDING**



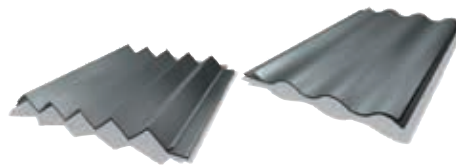
**SIDING.X**



**PREFABOND ALUMINIUM  
COMPOSITE PANEL**



**RIPPLE PROFILE  
SERRATED PROFILE**



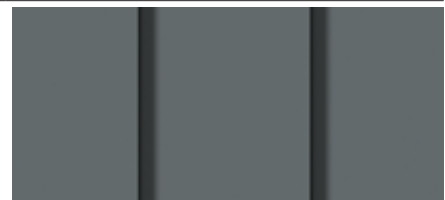
**RHOMBOID FAÇADE TILE  
20 × 20**  
**RHOMBOID FAÇADE TILE  
29 × 29**  
**RHOMBOID FAÇADE TILE  
44 × 44**  
**FAÇADE SHINGLE**



**FX.12 FAÇADE PANEL**



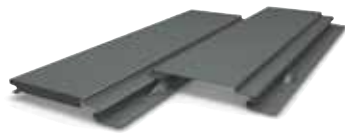
**PREFALZ**



# APPLICATION — SIDING

## SIDING

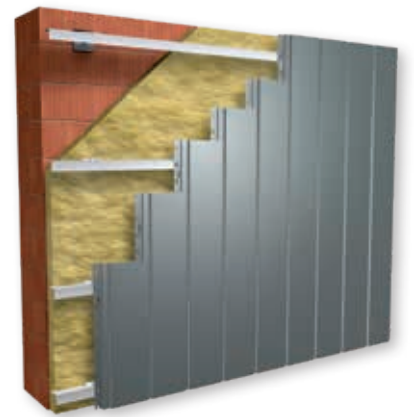
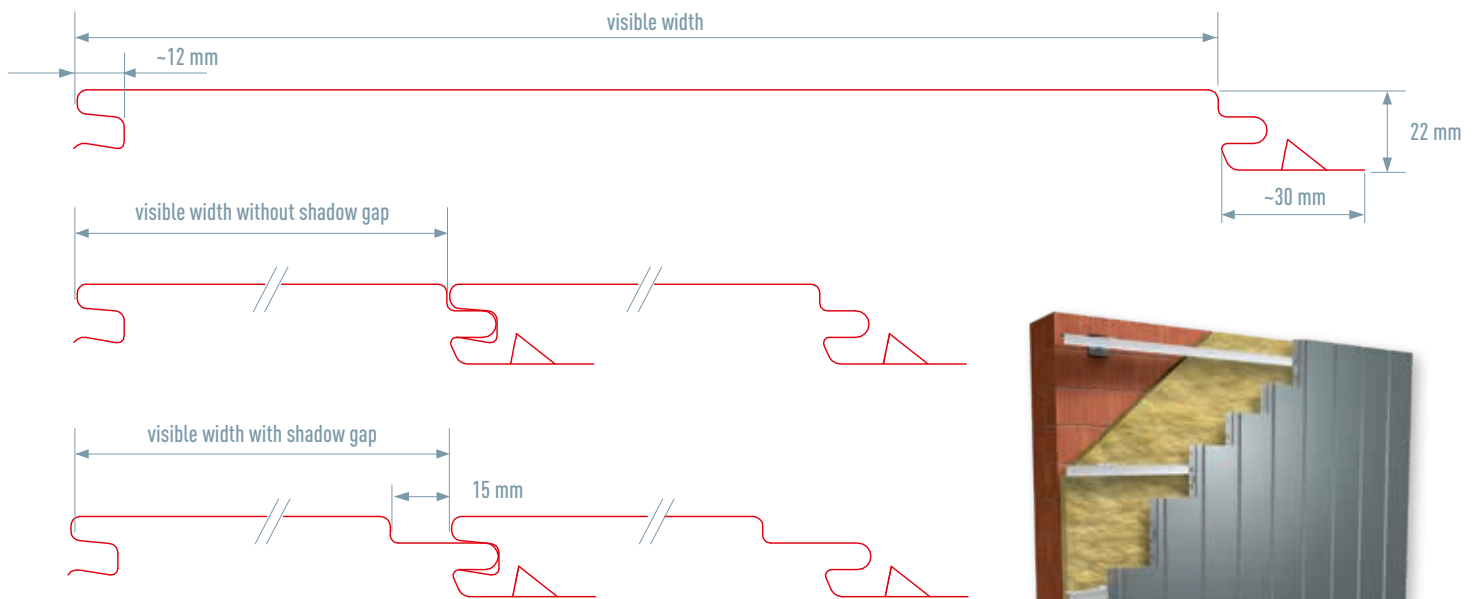
<b>MATERIAL</b>	colour-coated aluminium alloy smooth finish, stucco or lined with shadow gap option	
<b>FASTENING</b>	screwed down	
<b>COATING</b>	high-quality coil coating	
<b>STANDARD FORMATS</b>	<b>Siding:</b> 138 × 0.7 mm 200 × 1.0 mm 300 × 1.2 mm 400 × 1.2 mm	<b>Siding.X:</b> 200 × 1.0 mm 300 × 1.0 mm 400 × 1.0 mm
<b>LENGTH</b>	500–2500 mm for all visible widths (with PREFA joint) 500–6200 mm for all visible widths (without PREFA joint)	
<b>WEIGHT</b>	3.30–4.30 kg/m <sup>2</sup>	



siding



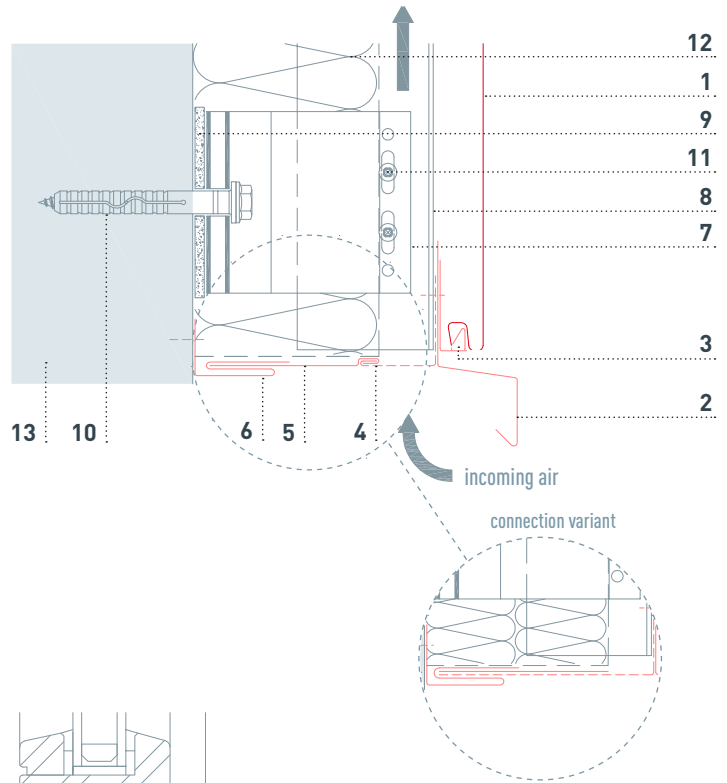
siding.X



# APPLICATION — SIDING (HORIZONTAL)

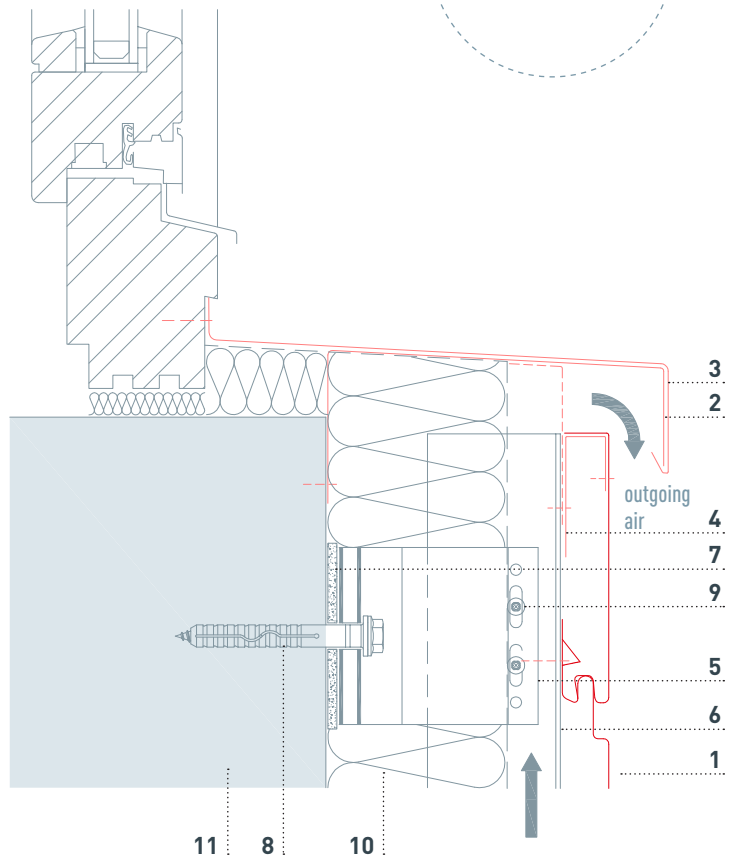
## BOTTOM CONNECTION

- 1 siding
- 2 drip (PREFA)
- 3 starter profile
- 4 perforated metal plate (canted)
- 5 cover flashing
- 6 insertion profile (PREFA)
- 7 spacer bracket
- 8 support profile
- 9 thermal break
- 10 fastener driven into the supporting structure
- 11 connection screw
- 12 insulation
- 13 supporting structure



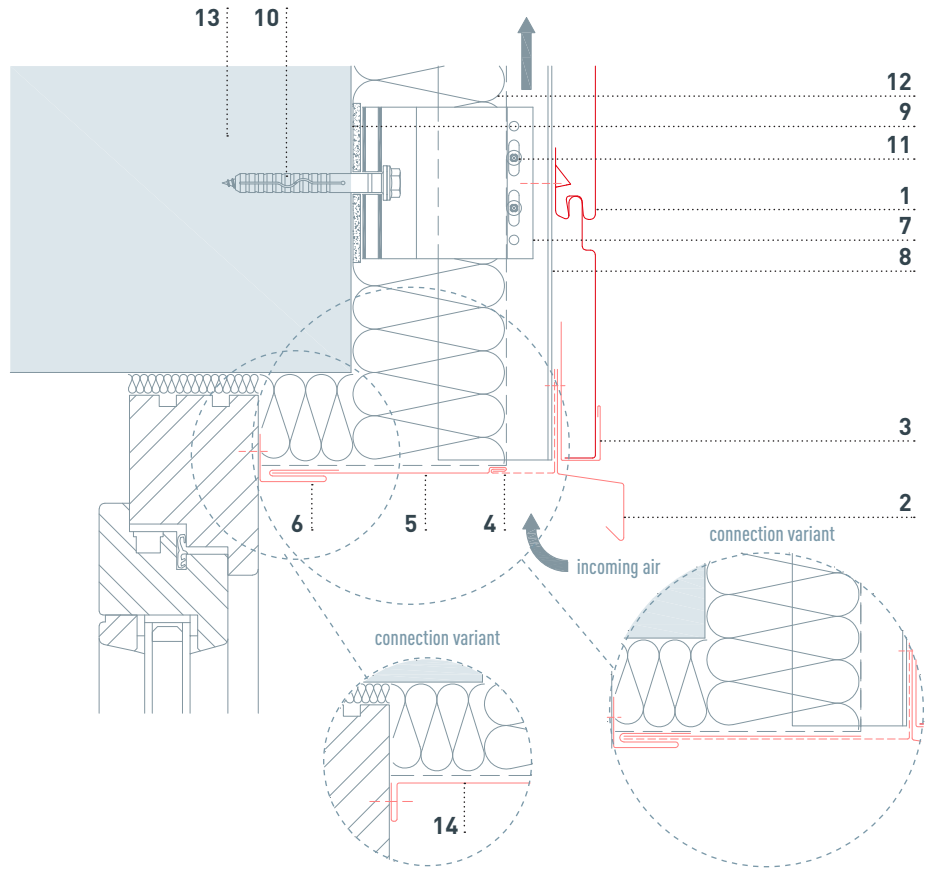
## WINDOW LEDGE

- 1 siding
- 2 continuous pre-formed supporting flashing strip
- 3 window ledge
- 4 channel profile
- 5 spacer bracket
- 6 support profile
- 7 thermal break
- 8 fastener driven into the supporting structure
- 9 connection screw
- 10 insulation
- 11 supporting structure



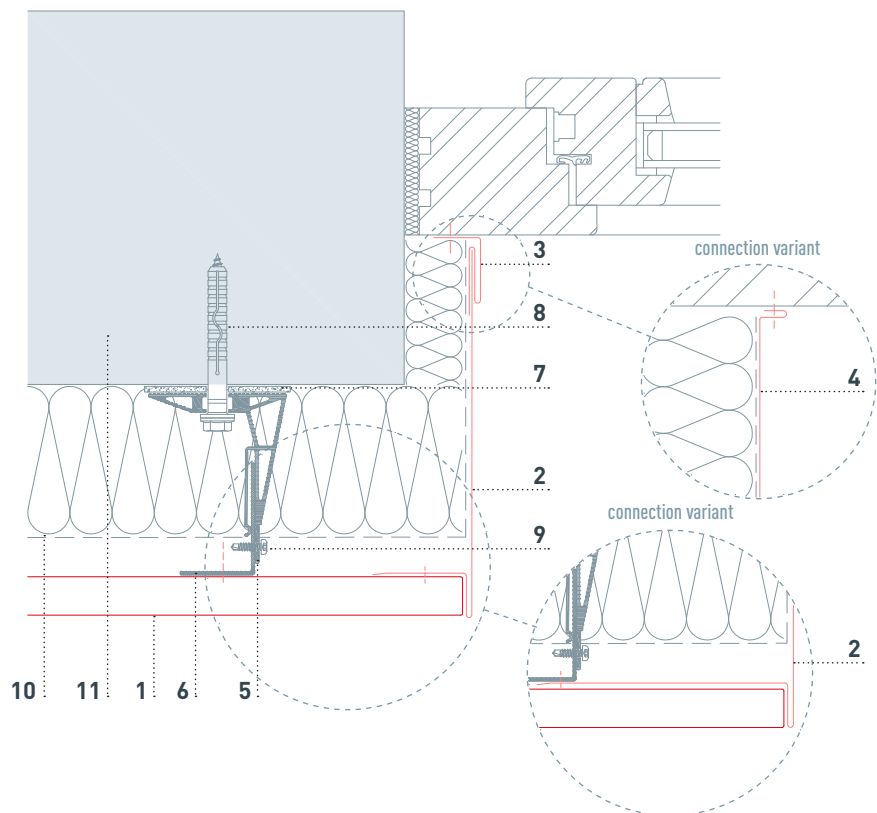
## WINDOW LINTEL

- 1 siding
- 2 drip (PREFA)
- 3 canted channel
- 4 perforated metal plate (canted)
- 5 cover flashing
- 6 insertion profile (PREFA)
- 7 spacer bracket
- 8 support profile
- 9 thermal break
- 10 fastener driven into the supporting structure
- 11 connection screw
- 12 insulation
- 13 supporting structure
- 14 connection variant



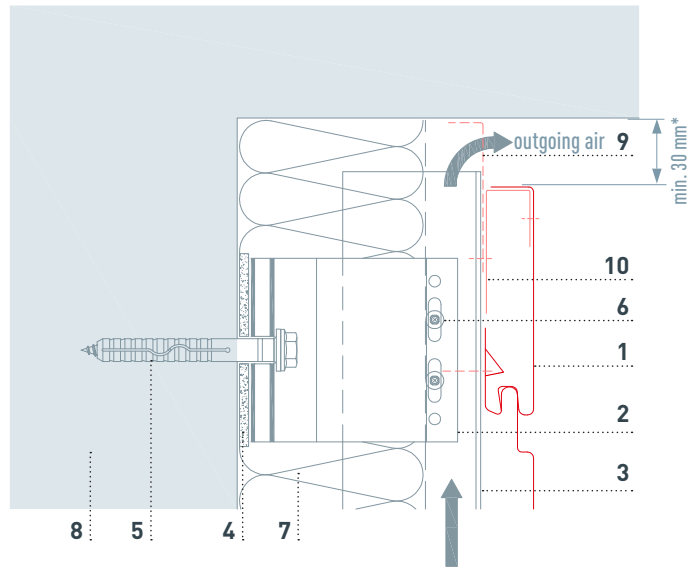
## WINDOW REVEAL

- 1 siding
- 2 jamb flashing
- 3 insertion profile (PREFA)
- 4 connection variant
- 5 spacer bracket
- 6 support profile
- 7 thermal break
- 8 fastener driven into the supporting structure
- 9 connection screw
- 10 insulation
- 11 supporting structure



## TOP CONNECTION

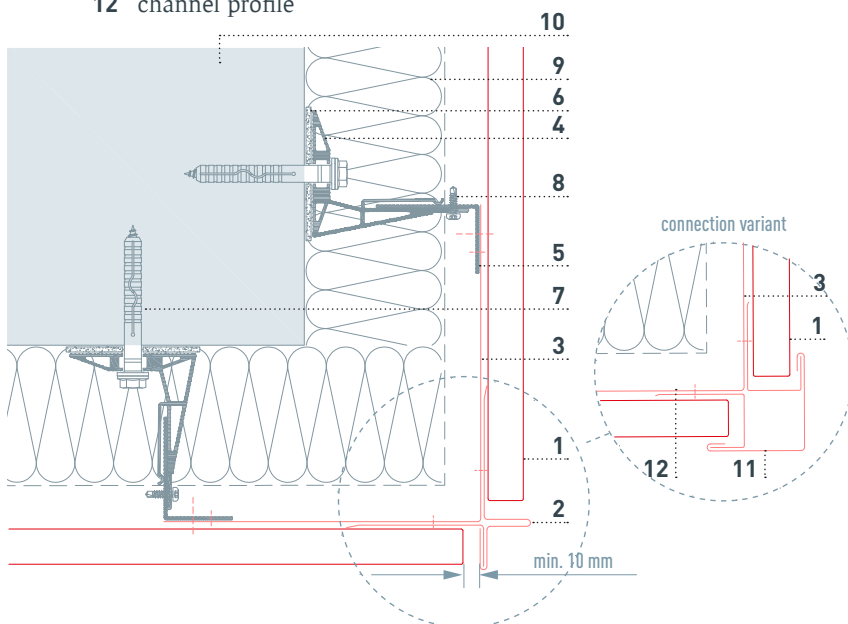
- 1 siding
- 2 spacer bracket
- 3 support profile
- 4 thermal break
- 5 fastener driven into the supporting structure
- 6 connection screw
- 7 insulation
- 8 supporting structure
- 9 perforated metal plate (canted)
- 10 channel profile



\* National standards and guidelines must be taken into account.

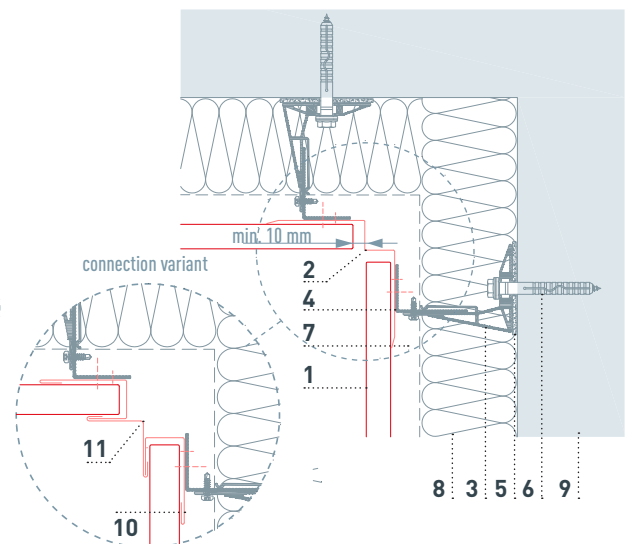
## EXTERNAL CORNER

- 1 siding
- 2 external corner flashing (two parts)
- 3 corner connector
- 4 spacer bracket
- 5 support profile
- 6 thermal break
- 7 fastener driven into the supporting structure
- 8 connection screw
- 9 insulation
- 10 supporting structure
- 11 external corner flashing
- 12 channel profile



## INTERNAL CORNER

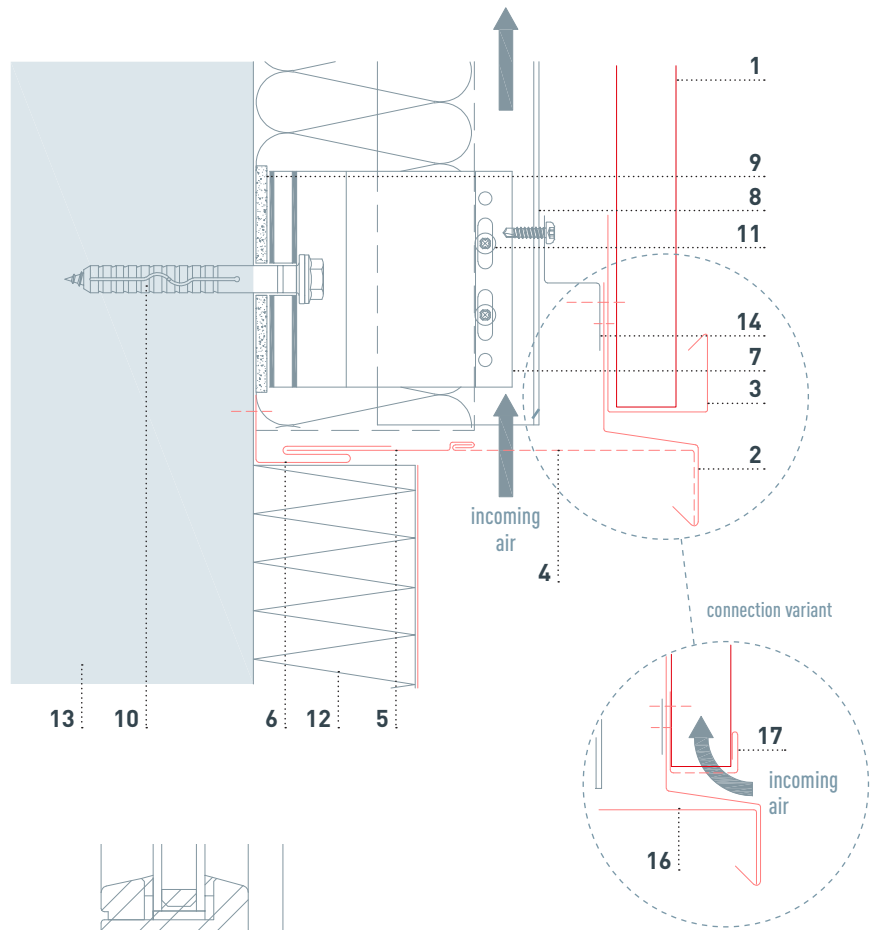
- 1 siding
- 2 internal corner
- 3 spacer bracket
- 4 support profile
- 5 thermal break
- 6 fastener driven into the supporting structure
- 7 connection screw
- 8 insulation
- 9 supporting structure
- 10 channel profile
- 11 internal corner flashing



# APPLICATION — SIDING (VERTICAL)

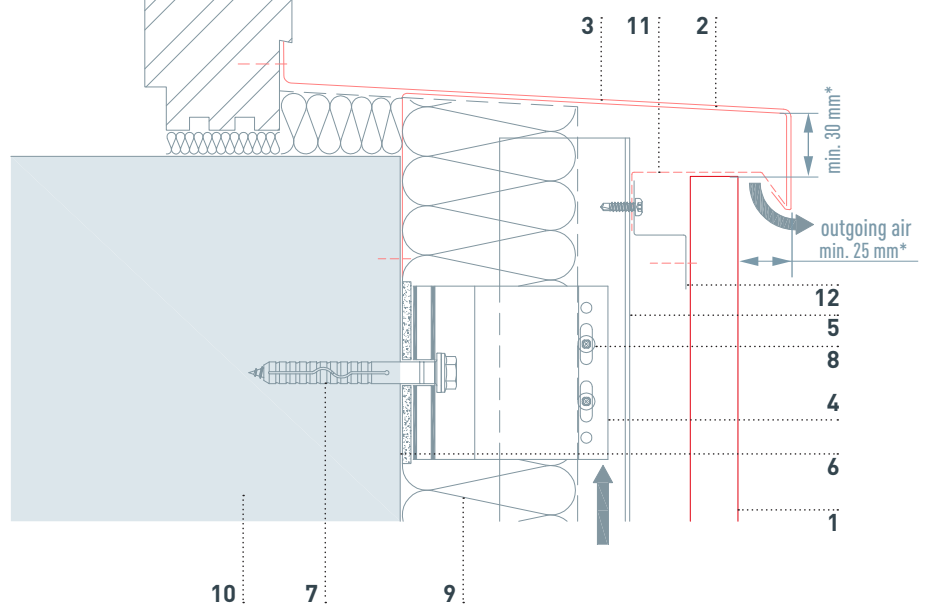
## BOTTOM CONNECTION

- 1 siding
- 2 drip (PREFA)
- 3 canted channel profile
- 4 perforated metal plate (canted)
- 5 cover flashing
- 6 insertion profile (PREFA)
- 7 spacer bracket
- 8 support profile
- 9 thermal break
- 10 fastener driven into the supporting structure
- 11 connection screw
- 12 insulation
- 13 supporting structure
- 14 Z-profile



## WINDOW LEDGE

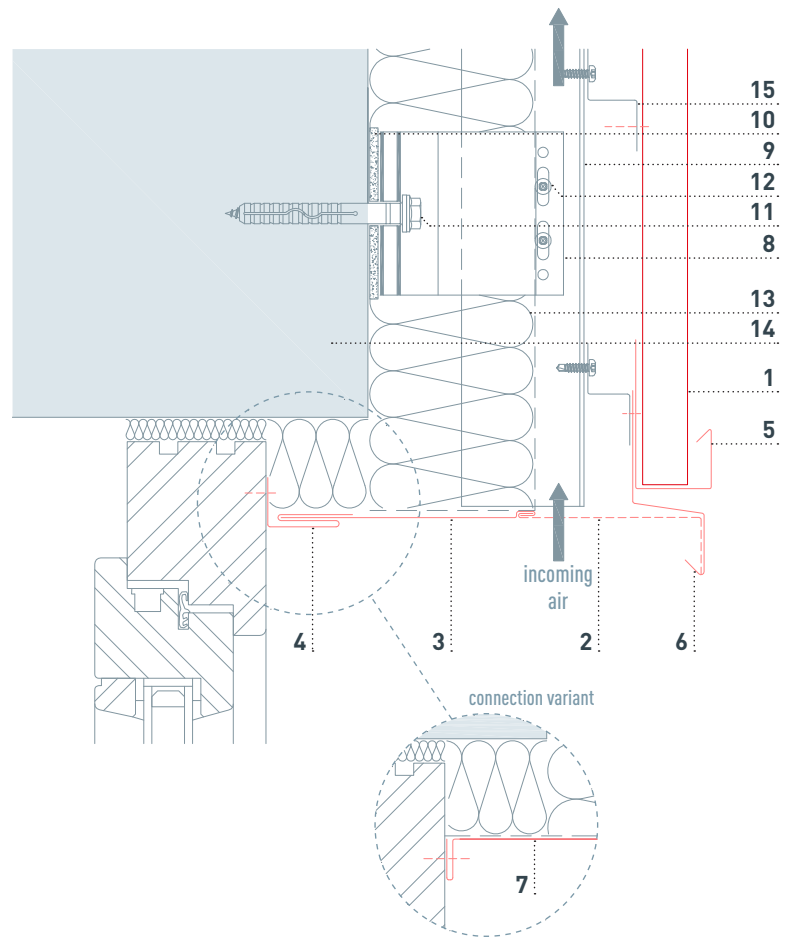
- 1 siding
- 2 continuous pre-formed supporting flashing strip
- 3 window ledge
- 4 spacer bracket
- 5 support profile
- 6 thermal break
- 7 fastener driven into the supporting structure
- 8 connection screw
- 9 insulation
- 10 supporting structure
- 11 perforated metal plate (canted)
- 12 Z-profile



\* National standards and guidelines must be taken into account.

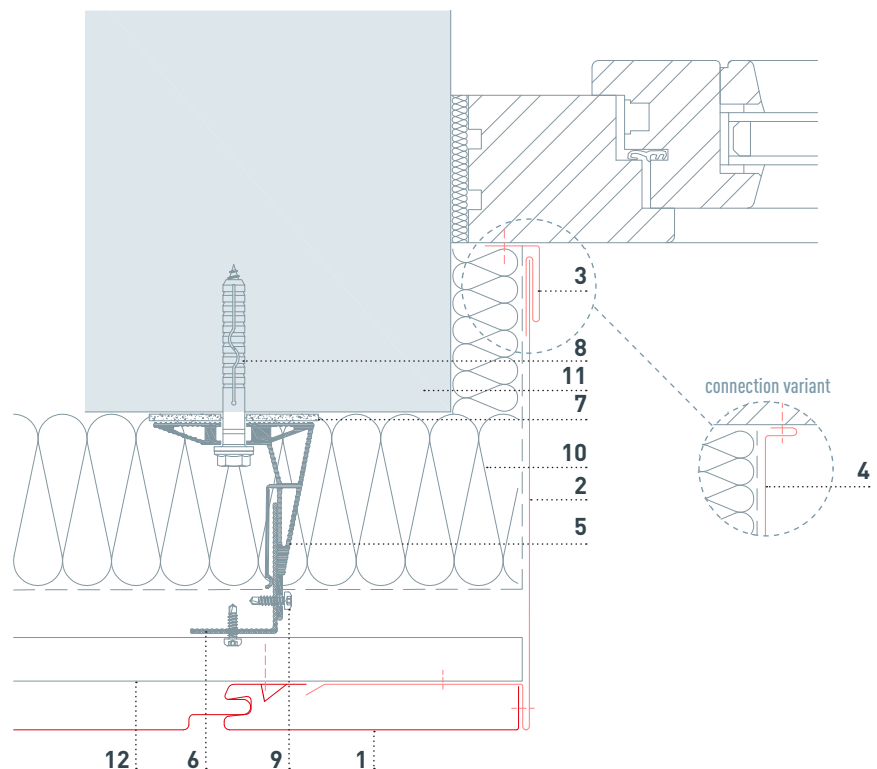
## WINDOW LINTEL

- 1 siding
- 2 perforated metal plate (canted)
- 3 cover flashing
- 4 insertion profile (PREFA)
- 5 canted channel profile (PREFA)
- 6 drip
- 7 connection variant
- 8 spacer bracket
- 9 support profile
- 10 thermal break
- 11 fastener driven into the supporting structure
- 12 connection screw
- 13 insulation
- 14 supporting structure
- 15 Z-profile



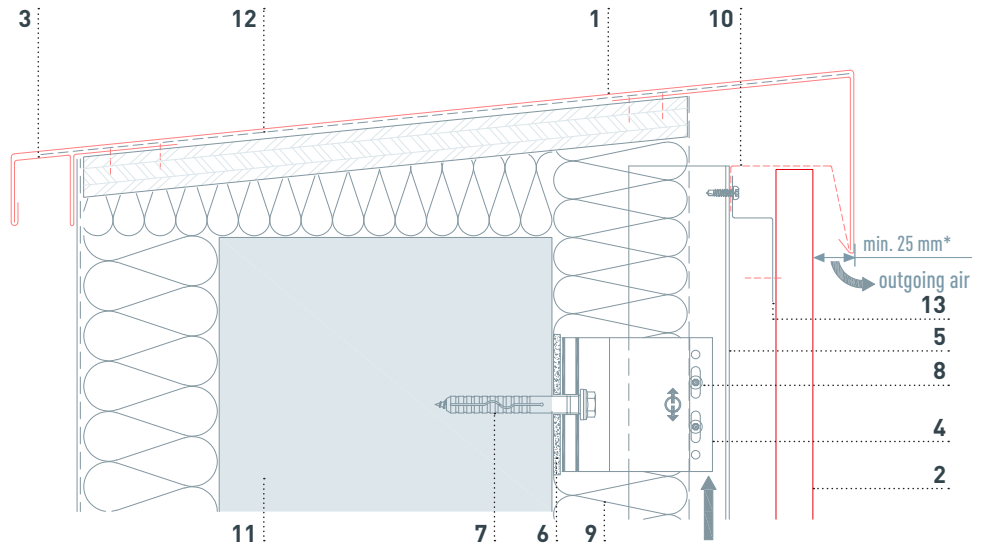
## WINDOW REVEAL

- 1 siding
- 2 jamb flashing
- 3 insertion profile (PREFA)
- 4 connection variant
- 5 spacer bracket
- 6 support profile
- 7 thermal break
- 8 fastener driven into the supporting structure
- 9 connection screw
- 10 insulation
- 11 supporting structure
- 12 Z-profile



## TOP CONNECTION

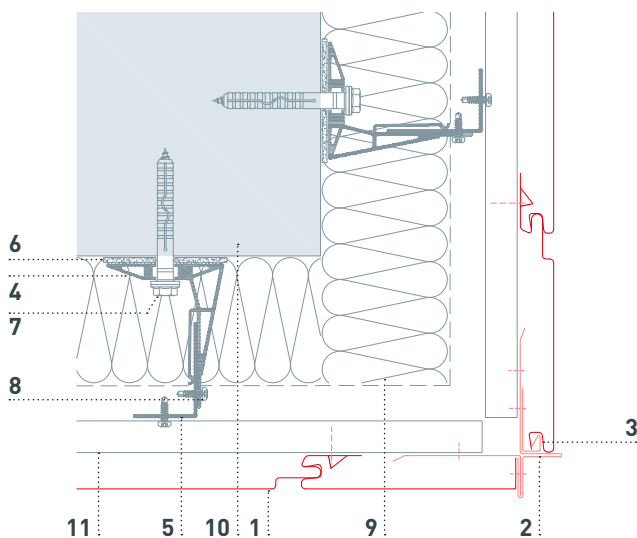
- 1 roof parapet
- 2 siding
- 3 cleat strip
- 4 spacer bracket
- 5 support profile
- 6 thermal break
- 7 fastener driven into the supporting structure
- 8 connection screw
- 9 insulation
- 10 perforated metal plate (canted)
- 11 supporting structure
- 12 separation layer
- 13 Z-profile



\* National standards and guidelines must be taken into account.

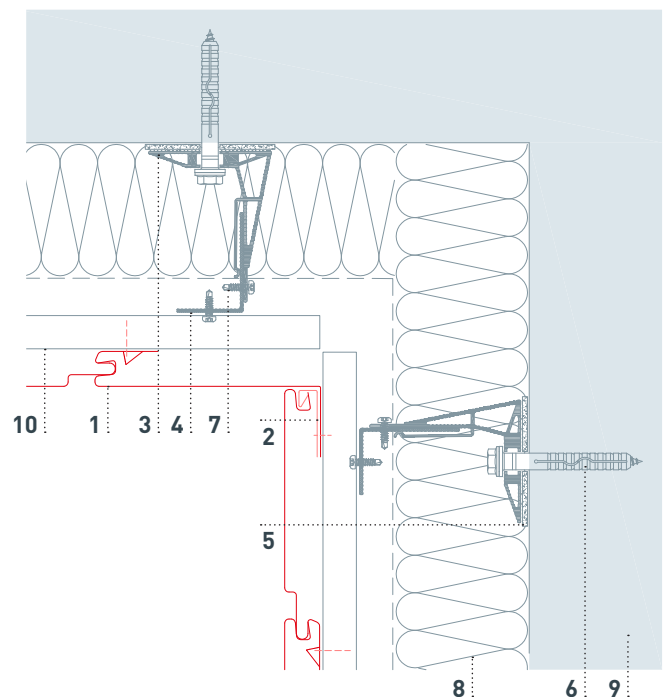
## EXTERNAL CORNER

- 1 siding
- 2 external corner flashing (two parts)
- 3 starter profile (PREFA)
- 4 spacer bracket
- 5 support profile
- 6 thermal break
- 7 fastener driven into the supporting structure
- 8 connection screw
- 9 insulation
- 10 supporting structure
- 11 Z-profile



## INTERNAL CORNER

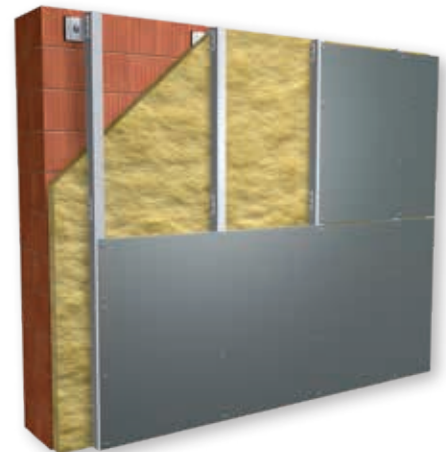
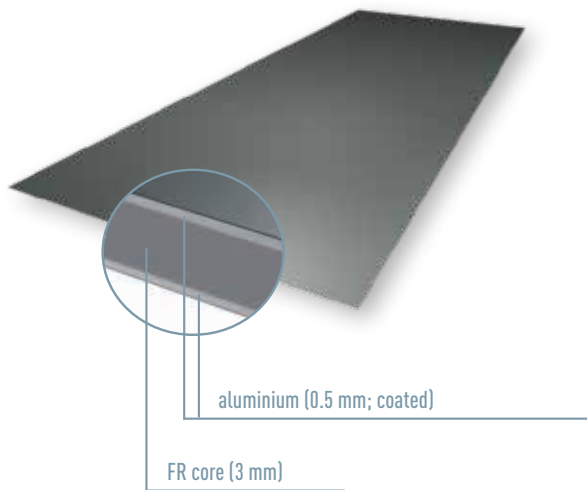
- 1 siding
- 2 starter profile (PREFA)
- 3 spacer bracket
- 4 support profile
- 5 thermal break
- 6 fastener driven into the supporting structure
- 7 connection screw
- 8 insulation
- 9 supporting structure
- 10 Z-profile



# APPLICATION — PREFABOND ALUMINIUM COMPOSITE PANEL

## PREFABOND ALUMINIUM COMPOSITE PANEL

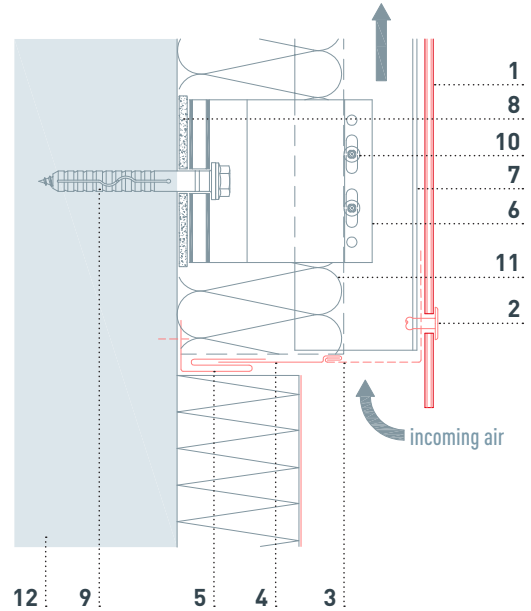
MATERIAL	aluminium with FR core; with protective film
FASTENING	timber supporting substrate: screwed down or glued aluminium supporting substrate: riveted or glued
COATING	high-quality coil coating front: Duragloss 5000 reverse: protective paint
STANDARD FORMAT	4,010 × 1,535 × 4.0 mm (customised sizes possible) usable format: 4,000 × 1,525 mm maximum permitted panel size on glued installations: 3,000 × 1,500 mm
WEIGHT	7.6 kg/m <sup>2</sup>
CORE	standard: FR core (fire retardant) A2 core on request



# APPLICATION — PREFABOND ALUMINIUM COMPOSITE PANEL FASTENED MECHANICALLY (SCREWED DOWN / RIVETED)

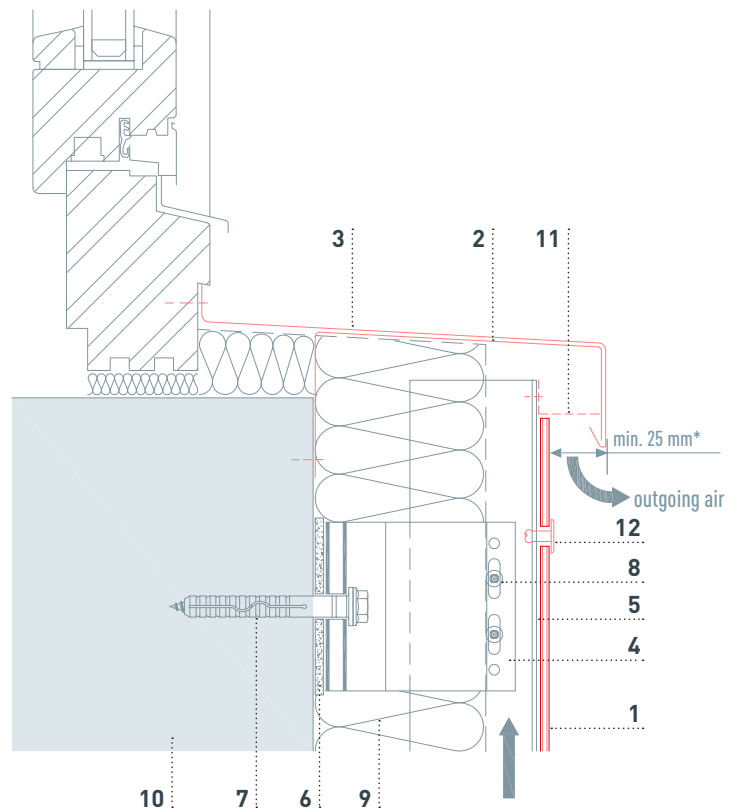
## BOTTOM CONNECTION

- 1 PREFABOND aluminium composite panel
- 2 façade rivet or façade screw
- 3 perforated metal plate (canted)
- 4 cover flashing
- 5 insertion profile (PREFA)
- 6 spacer bracket
- 7 support profile
- 8 thermal break
- 9 fastener driven into the supporting structure
- 10 connection screw
- 11 insulation
- 12 supporting structure



## WINDOW LEDGE

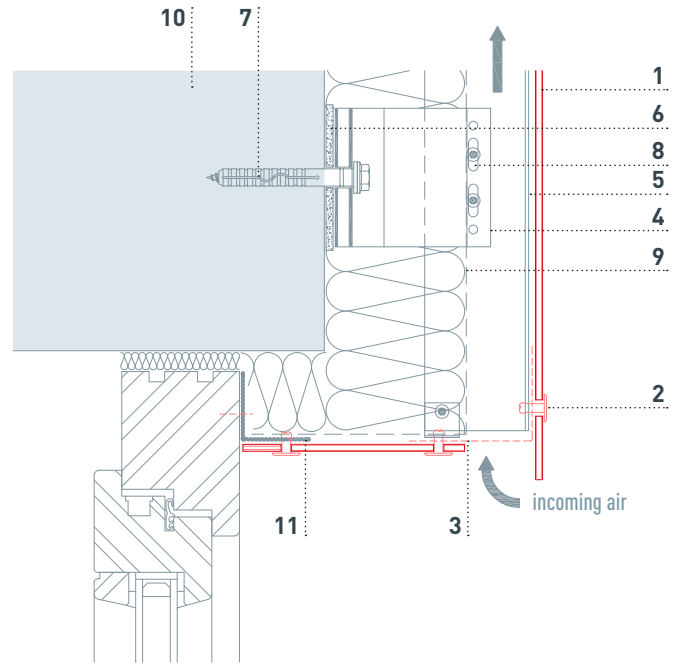
- 1 PREFABOND aluminium composite panel
- 2 continuous pre-formed supporting flashing strip
- 3 window ledge
- 4 spacer bracket
- 5 support profile
- 6 thermal break
- 7 fastener driven into the supporting structure
- 8 connection screw
- 9 insulation
- 10 supporting structure
- 11 perforated metal plate (canted)
- 12 façade rivet or façade screw



\* National standards and guidelines must be taken into account.

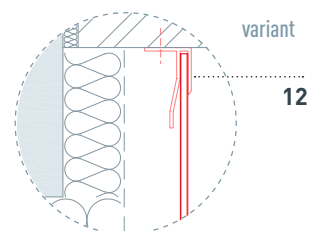
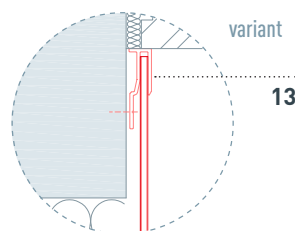
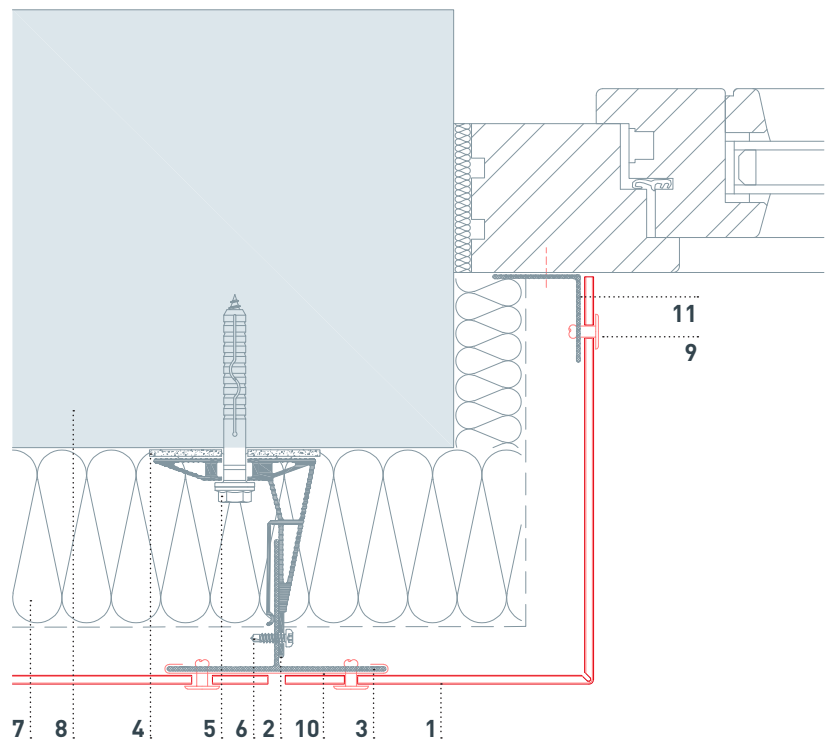
## WINDOW LINTEL

- 1 PREFABOND aluminium composite panel
- 2 façade rivet or façade screw
- 3 perforated metal plate (canted)
- 4 spacer bracket
- 5 support profile
- 6 thermal break
- 7 fastener driven into the supporting structure
- 8 connection screw
- 9 insulation
- 10 supporting structure
- 11 support profile



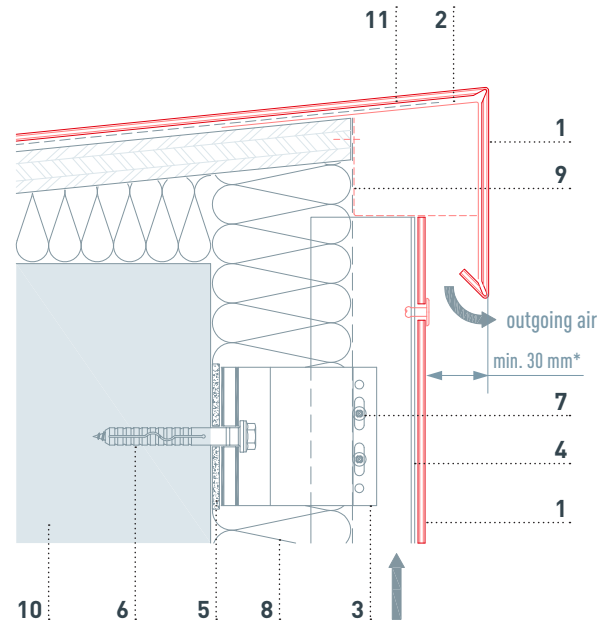
## WINDOW REVEAL

- 1 PREFABOND aluminium composite panel
- 2 spacer bracket
- 3 support profile
- 4 thermal break
- 5 fastener driven into the supporting structure
- 6 connection screw
- 7 insulation
- 8 supporting structure
- 9 façade rivet or façade screw
- 10 joint backing strip
- 11 angle
- 12 F-profile (PREFA)
- 13 U-profile (PREFA)



## TOP CONNECTION

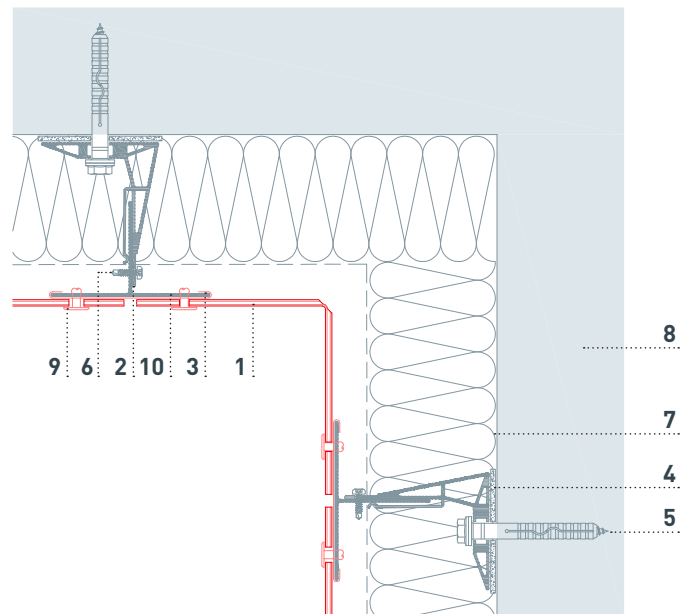
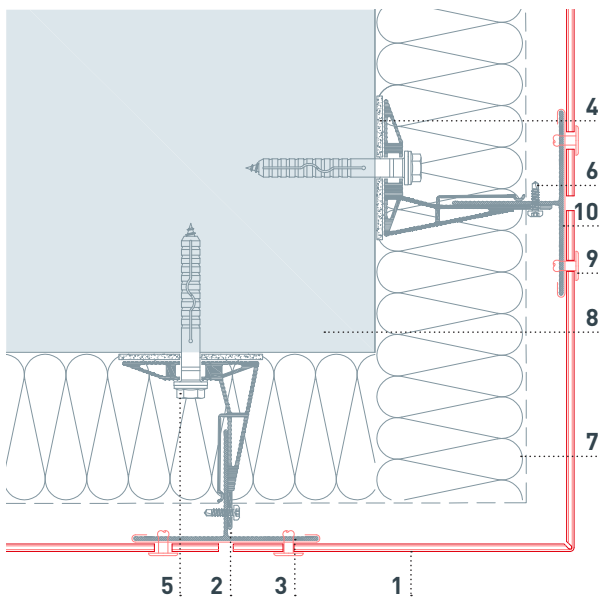
- 1 PREFABOND aluminium composite panel
- 2 cleat strip
- 3 spacer bracket
- 4 support profile
- 5 thermal break
- 6 fastener driven into the supporting structure
- 7 connection screw
- 8 insulation
- 9 perforated metal plate (canted)
- 10 supporting structure
- 11 separation layer



\* National standards and guidelines must be taken into account.

## EXTERNAL AND INTERNAL CORNER

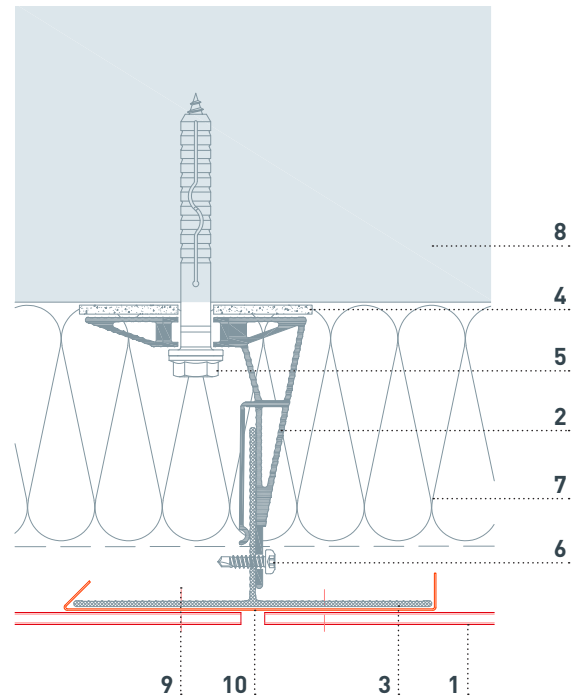
- 1 PREFABOND aluminium composite panel
- 2 spacer bracket
- 3 support profile
- 4 thermal break
- 5 fastener driven into the supporting structure
- 6 connection screw
- 7 insulation
- 8 supporting structure
- 9 façade rivet or façade screw
- 10 joint backing strip



# JOINT BACKING STRIP — **PREFABOND ALUMINIUM COMPOSITE PANEL – RIVETED**

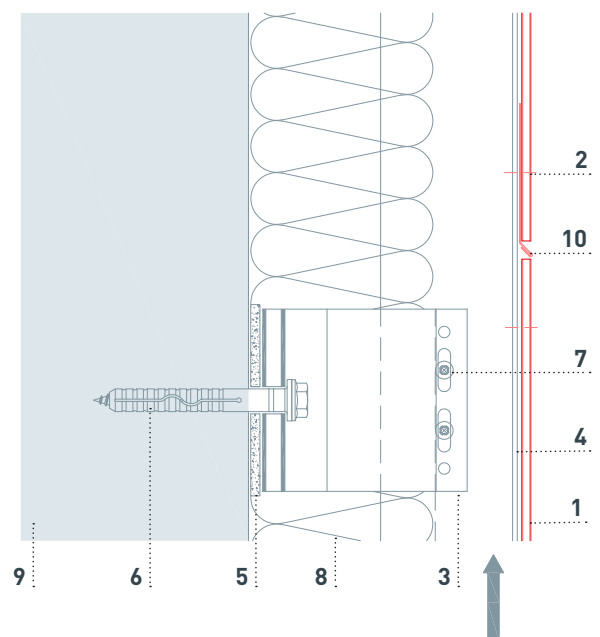
## VERTICAL JOINT BACKING STRIP

- 1 PREFABOND aluminium composite panel
- 2 spacer bracket
- 3 support profile
- 4 thermal break
- 5 fastener driven into the supporting structure
- 6 connection screw
- 7 insulation
- 8 supporting structure
- 9 façade rivet
- 10 vertical joint backing strip



## HORIZONTAL JOINT BACKING STRIP

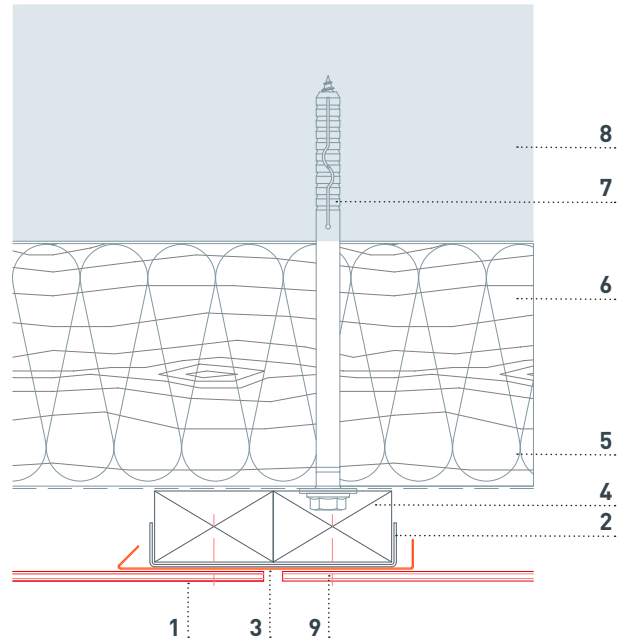
- 1 PREFABOND aluminium composite panel
- 2 façade rivet
- 3 spacer bracket
- 4 support profile
- 5 thermal break
- 6 fastener driven into the supporting structure
- 7 connection screw
- 8 insulation
- 9 supporting structure
- 10 horizontal joint backing strip



# JOINT BACKING STRIP — **PREFABOND ALUMINIUM COMPOSITE PANEL – SCREWED DOWN**

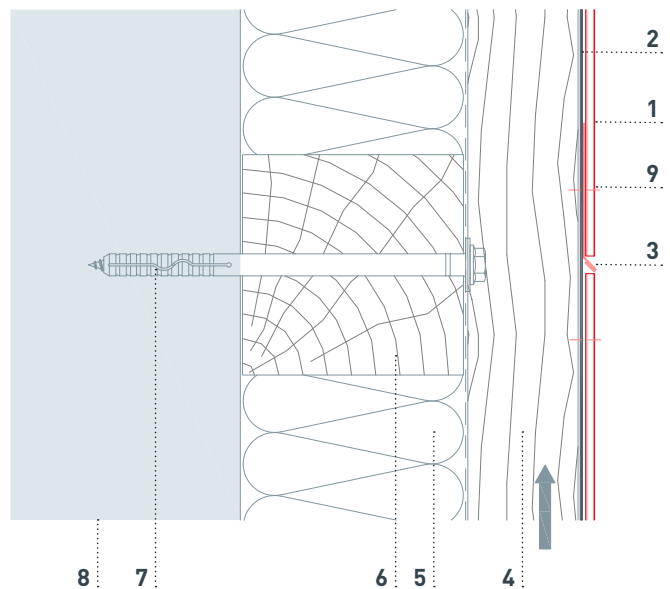
## VERTICAL JOINT BACKING STRIP

- 1 PREFABOND aluminium composite panel
- 2 EPDM joint tape
- 3 vertical joint backing strip
- 4 counter batten
- 5 insulation
- 6 nogging piece
- 7 fastener driven into the supporting structure
- 8 supporting structure
- 9 façade screw



## HORIZONTAL JOINT BACKING STRIP

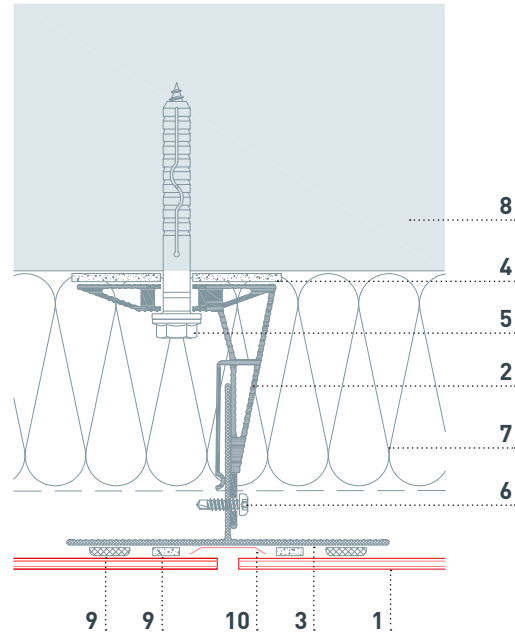
- 1 PREFABOND aluminium composite panel
- 2 EPDM joint tape
- 3 horizontal joint backing strip
- 4 counter batten
- 5 insulation
- 6 nogging piece
- 7 fastener driven into the supporting structure
- 8 supporting structure
- 9 façade screw



# JOINT BACKING STRIP — **PREFABOND ALUMINIUM COMPOSITE PANEL – GLUED**

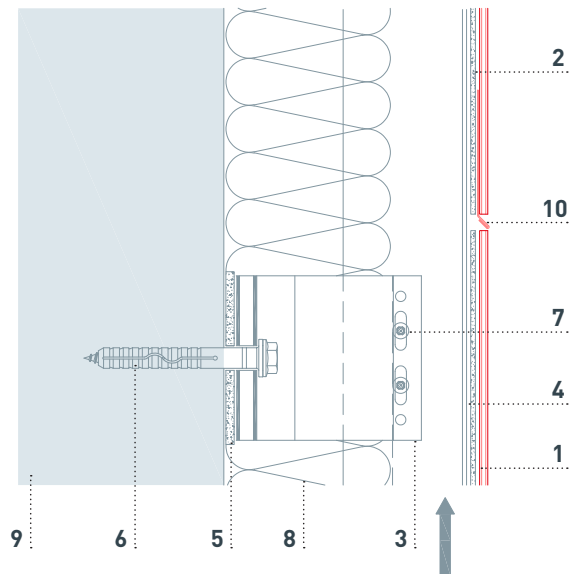
## VERTICAL JOINT BACKING STRIP

- 1 PREFABOND aluminium composite panel
- 2 spacer bracket
- 3 support profile
- 4 thermal break
- 5 fastener driven into the supporting structure
- 6 connection screw
- 7 insulation
- 8 supporting structure
- 9 adhesive system
- 10 joint backing strip



## HORIZONTAL JOINT BACKING STRIP

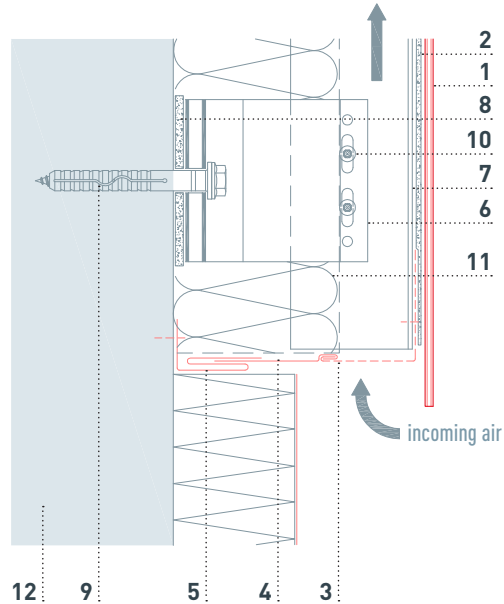
- 1 PREFABOND aluminium composite panel
- 2 adhesive system
- 3 spacer bracket
- 4 support profile
- 5 thermal break
- 6 fastener driven into the supporting structure
- 7 connection screw
- 8 insulation
- 9 supporting structure
- 10 horizontal joint backing strip



# APPLICATION — PREFABOND ALUMINIUM COMPOSITE PANEL – GLUED

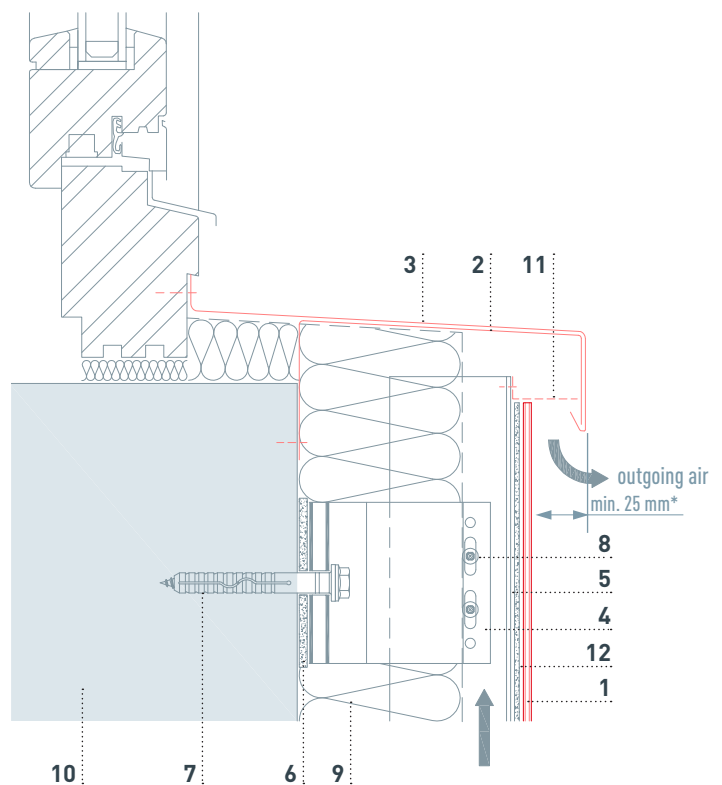
## BOTTOM CONNECTION

- 1 PREFABOND aluminium composite panel
- 2 adhesive system
- 3 perforated metal plate (canted)
- 4 cover flashing
- 5 insertion profile (PREFA)
- 6 spacer bracket
- 7 support profile
- 8 thermal break
- 9 fastener driven into the supporting structure
- 10 connection screw
- 11 insulation
- 12 supporting structure



## WINDOW LEDGE

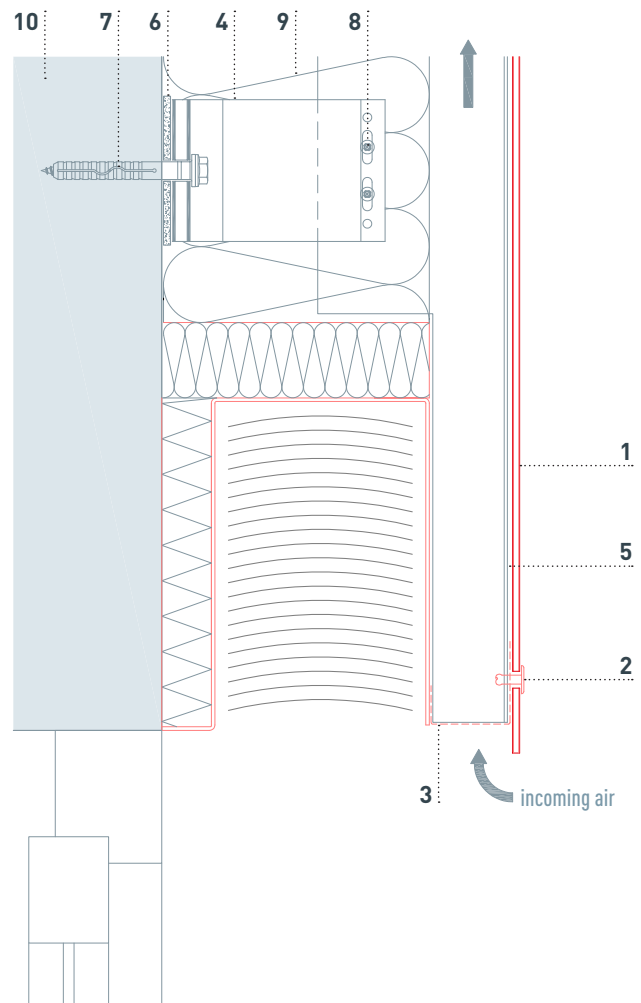
- 1 PREFABOND aluminium composite panel
- 2 continuous pre-formed supporting flashing strip
- 3 window ledge
- 4 spacer bracket
- 5 support profile
- 6 thermal break
- 7 fastener driven into the supporting structure
- 8 connection screw
- 9 insulation
- 10 supporting structure
- 11 perforated metal plate (canted)
- 12 adhesive system



\* National standards and guidelines must be taken into account.

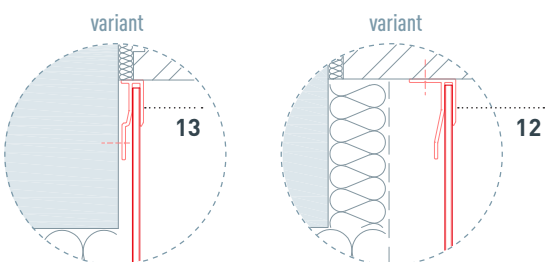
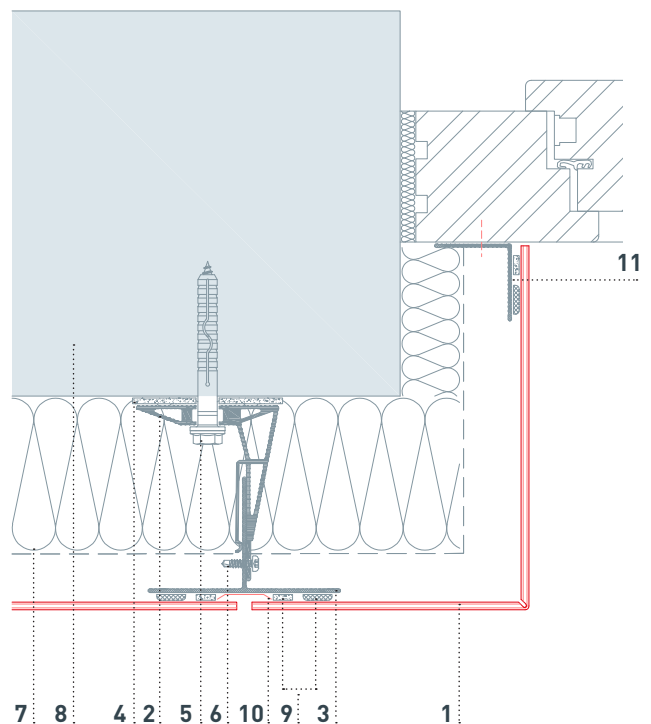
## WINDOW LINTEL

- 1 PREFABOND aluminium composite panel
- 2 façade rivet or façade screw
- 3 perforated metal plate (canted)
- 4 spacer bracket
- 5 support profile
- 6 thermal break
- 7 fastener driven into the supporting structure
- 8 connection screw
- 9 insulation
- 10 supporting structure



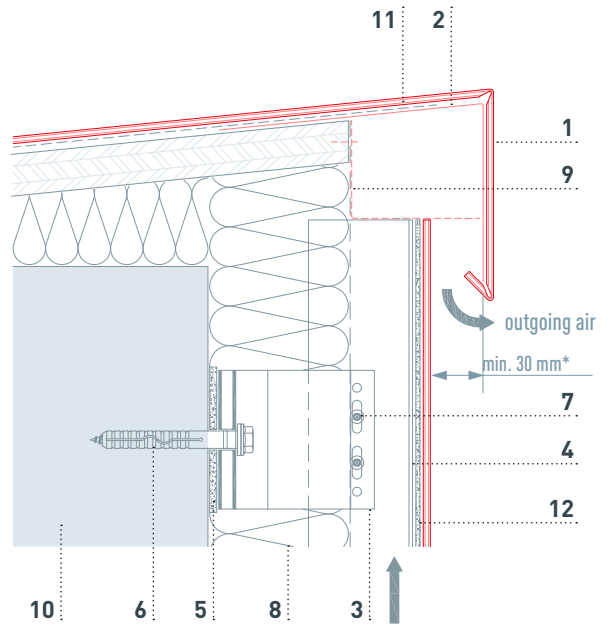
## WINDOW REVEAL

- 1 PREFABOND aluminium composite panel
- 2 spacer bracket
- 3 support profile
- 4 thermal break
- 5 fastener driven into the supporting structure
- 6 connection screw
- 7 insulation
- 8 supporting structure
- 9 adhesive system
- 10 joint backing strip
- 11 angle
- 12 F-profile (PREFA)
- 13 U-profile (PREFA)



## TOP CONNECTION

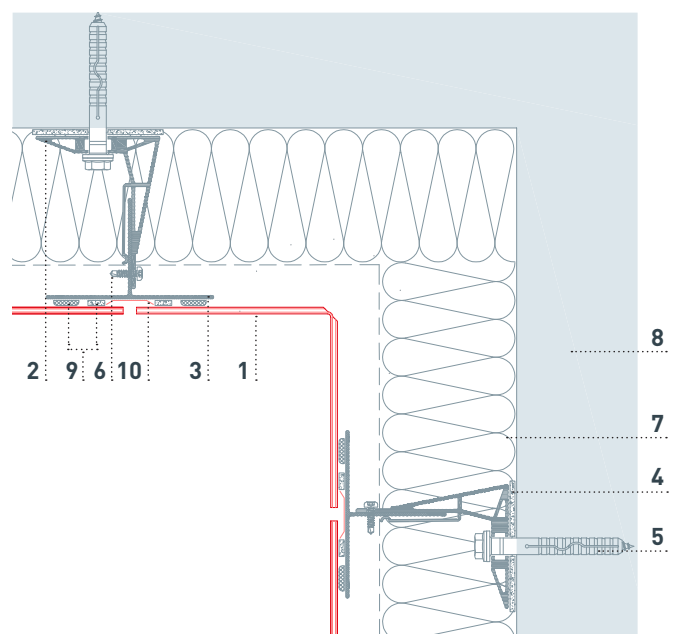
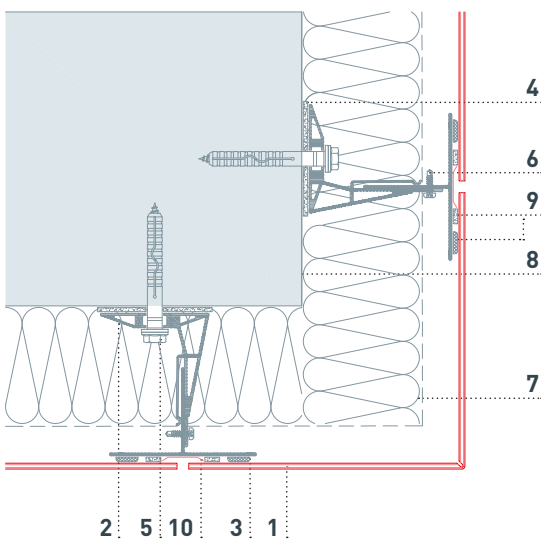
- 1 PREFABOND aluminium composite panel
- 2 cleat strip
- 3 spacer bracket
- 4 support profile
- 5 thermal break
- 6 fastener driven into the supporting structure
- 7 connection screw
- 8 insulation
- 9 perforated metal plate (canted)
- 10 supporting structure
- 11 separation layer
- 12 adhesive system



\* National standards and guidelines must be taken into account.

## EXTERNAL AND INTERNAL CORNER

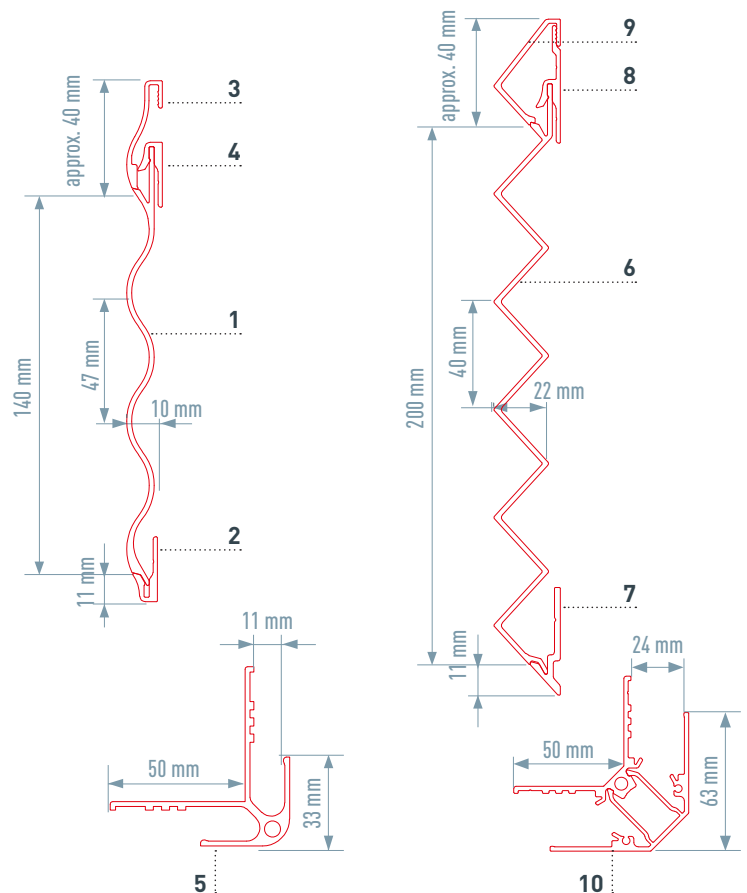
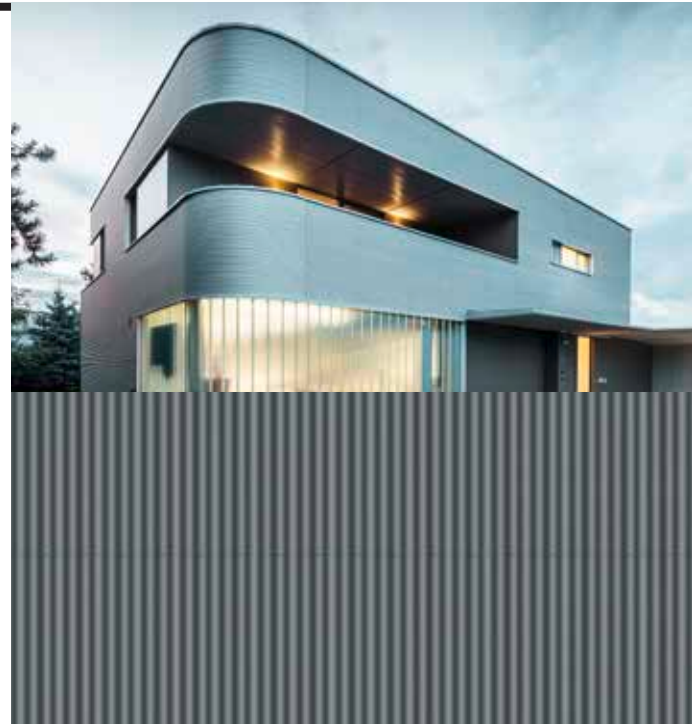
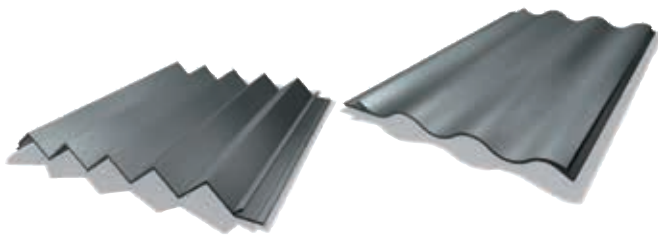
- 1 PREFABOND aluminium composite panel
- 2 spacer bracket
- 3 support profile
- 4 thermal break
- 5 fastener driven into the supporting structure
- 6 connection screw
- 7 insulation
- 8 supporting structure
- 9 adhesive system
- 10 joint backing strip



# APPLICATION — EXTRUDED PROFILES

## EXTRUDED PROFILES

<b>MATERIAL</b>	extruded aluminium alloy
<b>FASTENING</b>	with concealed screws
<b>FINISH</b>	uncoated, powder-coated (up to max. 3 m) production in anodizable material available
<b>DIMENSIONS</b> (profile height × spacing × material thickness)	ripple profile: 10/47/2.0 mm; width: 140 mm serrated profile: 22/40/2.0 mm; width: 200 mm
<b>WEIGHT</b>	ripple profile: 6.6 kg/m <sup>2</sup> serrated profile: 7.5 kg/m <sup>2</sup>

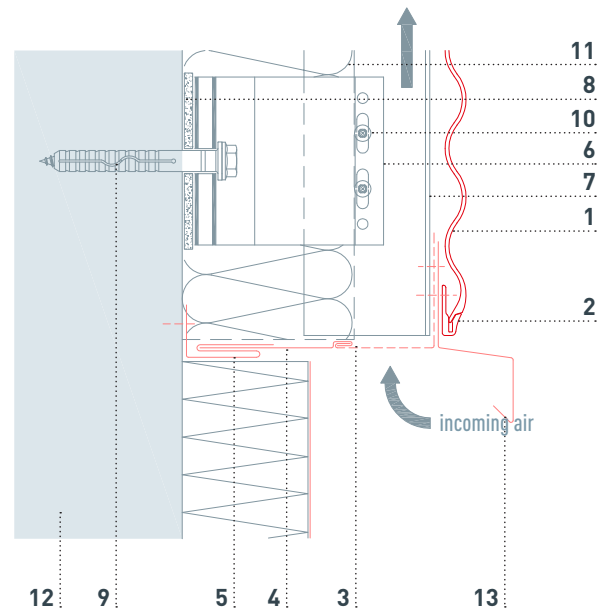


- 1 ripple profile 10/47/2.0 mm
- 2 starter profile for ripple profile
- 3 closing profile for ripple profile  
(only to be used with PREFEA sliding clips)
- 4 sliding clip for ripple profile (PREFEA)
- 5 external corner for ripple profile (PREFEA)
- 6 serrated profile 22/40/2.0 mm (PREFEA)
- 7 starter profile for serrated profile (PREFEA)
- 8 sliding clip for serrated profile (PREFEA)
- 9 closing profile for serrated profile  
(only to be used with PREFEA sliding clips)
- 10 corner profile for serrated profile (PREFEA)

# APPLICATION — RIPPLE PROFILE (HORIZONTAL)

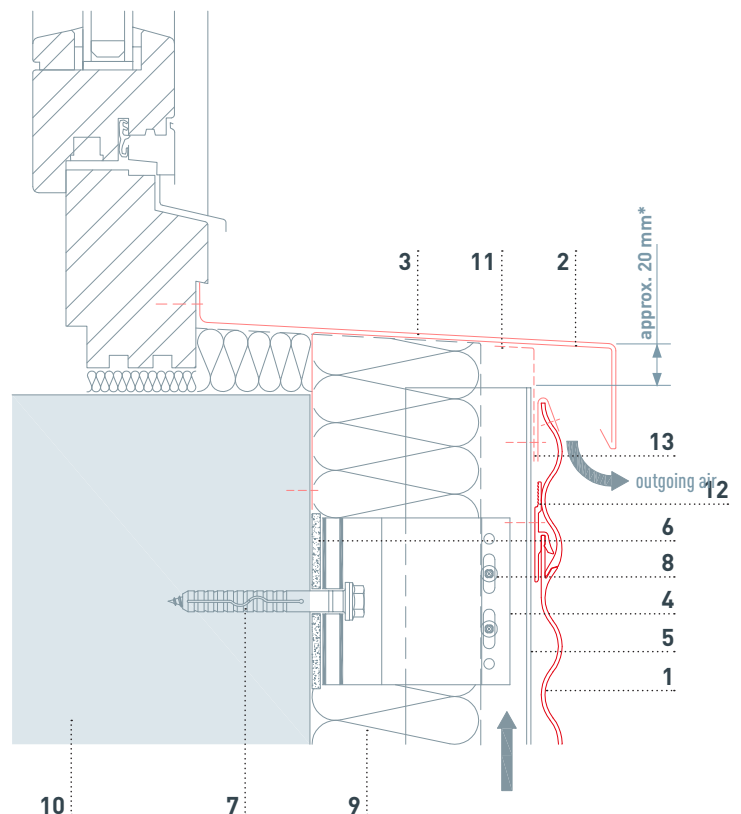
## BOTTOM CONNECTION

- 1 ripple profile 10/47/2.0 mm (PREFA)
- 2 starter profile for ripple profile (PREFA)
- 3 perforated metal plate (canted)
- 4 cover flashing
- 5 insertion profile (PREFA)
- 6 spacer bracket
- 7 support profile
- 8 thermal break
- 9 fastener driven into the supporting structure
- 10 connection screw
- 11 insulation
- 12 supporting structure
- 13 drip



## WINDOW LEDGE

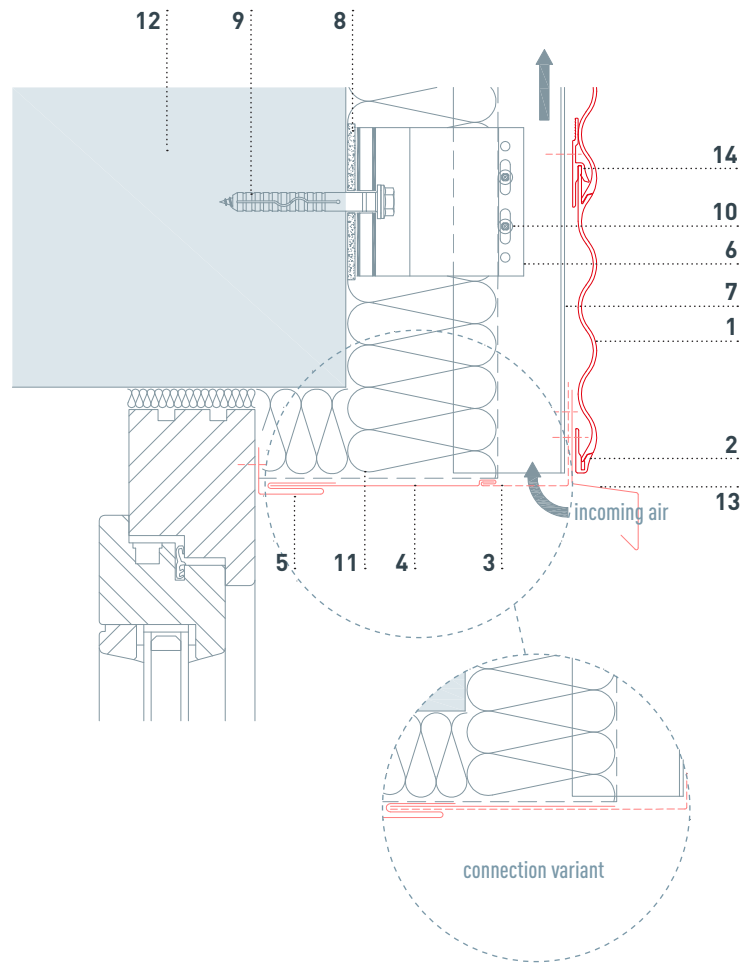
- 1 ripple profile 10/47/2.0 mm (PREFA)
- 2 continuous pre-formed supporting flashing strip
- 3 window ledge
- 4 spacer bracket
- 5 support profile
- 6 thermal break
- 7 fastener driven into the supporting structure
- 8 connection screw
- 9 insulation
- 10 supporting structure
- 11 perforated metal plate (canted)
- 12 sliding clip for ripple profile (PREFA)
- 13 double-lock clip



\* National standards and guidelines must be taken into account.

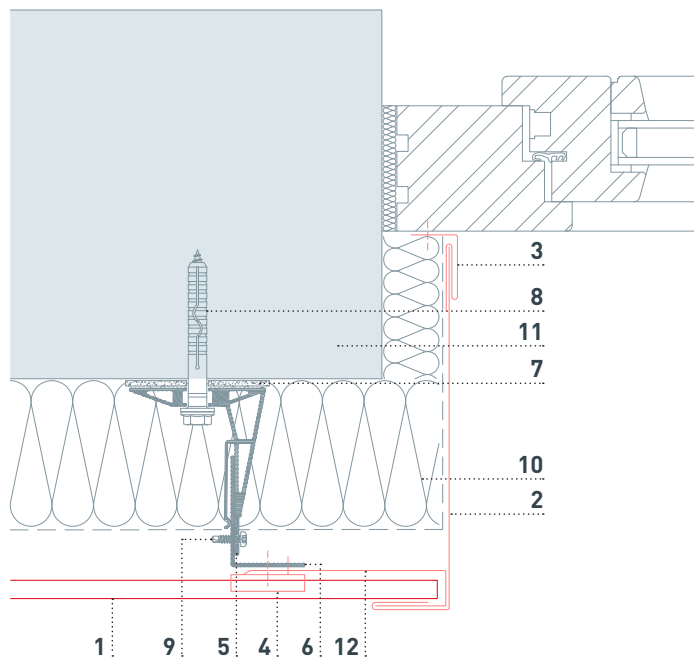
## WINDOW LINTEL

- 1 ripple profile 10/47/2.0 mm (PREFA)
- 2 starter profile for ripple profile
- 3 perforated metal plate (canted)
- 4 cover flashing
- 5 insertion profile (PREFA)
- 6 spacer bracket
- 7 support profile
- 8 thermal break
- 9 fastener driven into the supporting structure
- 10 connection screw
- 11 insulation
- 12 supporting structure
- 13 drip
- 14 sliding clip for ripple profile (PREFA)



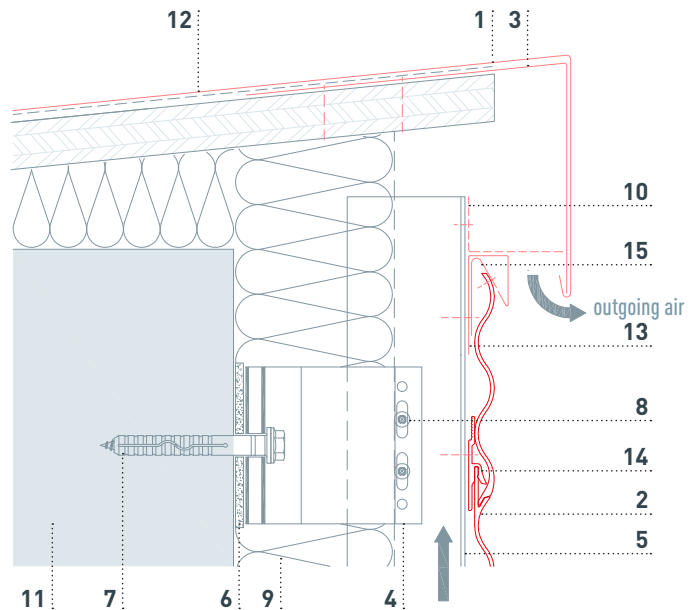
## WINDOW REVEAL

- 1 ripple profile 10/47/2.0 mm (PREFA)
- 2 jamb flashing
- 3 insertion profile (PREFA)
- 4 sliding clip for ripple profile (PREFA)
- 5 spacer bracket
- 6 support profile
- 7 thermal break
- 8 fastener driven into the supporting structure
- 9 connection screw
- 10 insulation
- 11 supporting structure
- 12 channel profile



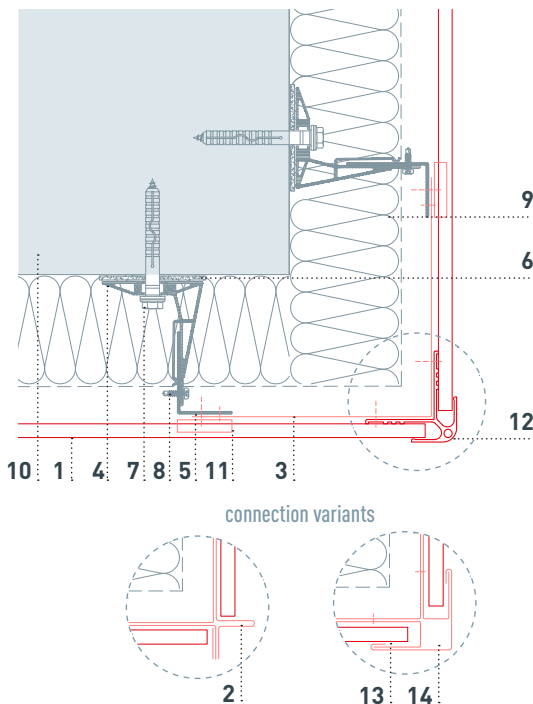
## TOP CONNECTION

- 1 roof parapet
- 2 ripple profile 10/47/2.0 mm (PREFA)
- 3 cleat strip
- 4 spacer bracket
- 5 support profile
- 6 thermal break
- 7 fastener driven into the supporting structure
- 8 connection screw
- 9 insulation
- 10 perforated metal plate (canted)
- 11 supporting structure
- 12 separation layer
- 13 channel profile
- 14 sliding clip for ripple profile (PREFA)
- 15 double-lock clip



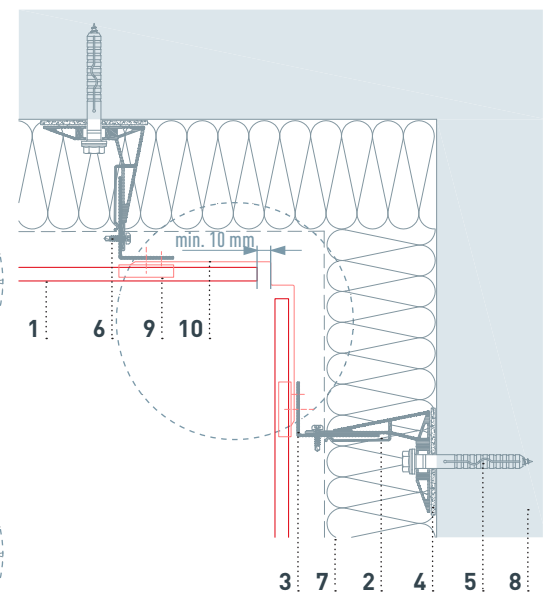
## EXTERNAL CORNER

- 1 ripple profile 10/47/2.0 mm (PREFA)
- 2 external corner flashing (two parts)
- 3 corner connector
- 4 spacer bracket
- 5 support profile
- 6 thermal break
- 7 fastener driven into the supporting structure
- 8 connection screw
- 9 insulation
- 10 supporting structure
- 11 sliding clip for ripple profile (PREFA)
- 12 external corner for ripple profile (PREFA)
- 13 channel profile
- 14 external corner flashing

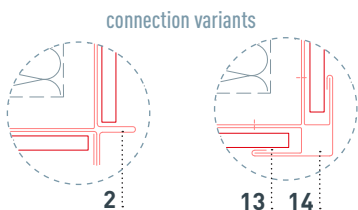
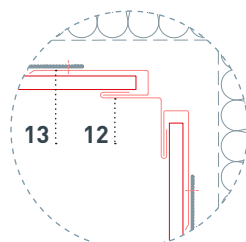
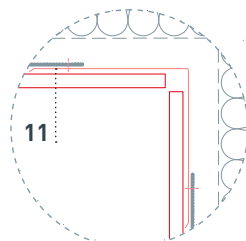


## INTERNAL CORNER

- 1 ripple profile 10/47/2.0 mm (PREFA)
- 2 spacer bracket
- 3 support profile
- 4 thermal break
- 5 fastener driven into the supporting structure
- 6 connection screw
- 7 insulation
- 8 supporting structure
- 9 sliding clip for ripple profile (PREFA)
- 10 canted internal corner (version 1)
- 11 canted internal corner (version 2)
- 12 canted internal corner (version 3)
- 13 channel profile



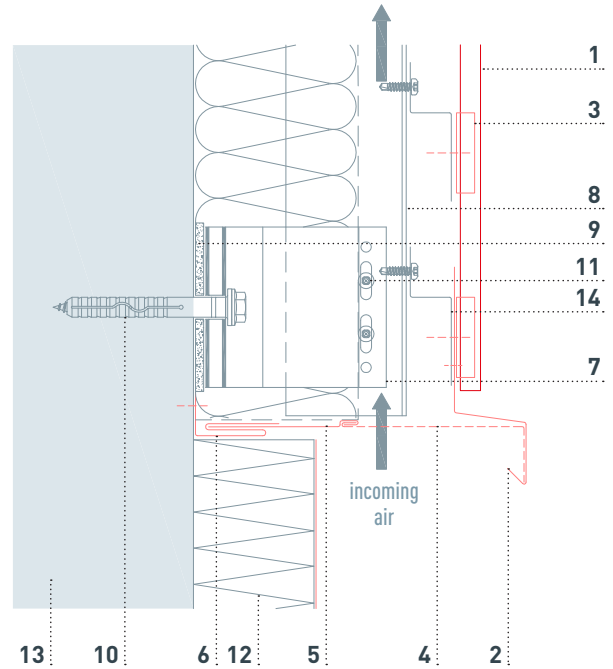
connection variants



# APPLICATION — RIPPLE PROFILE (VERTICAL)

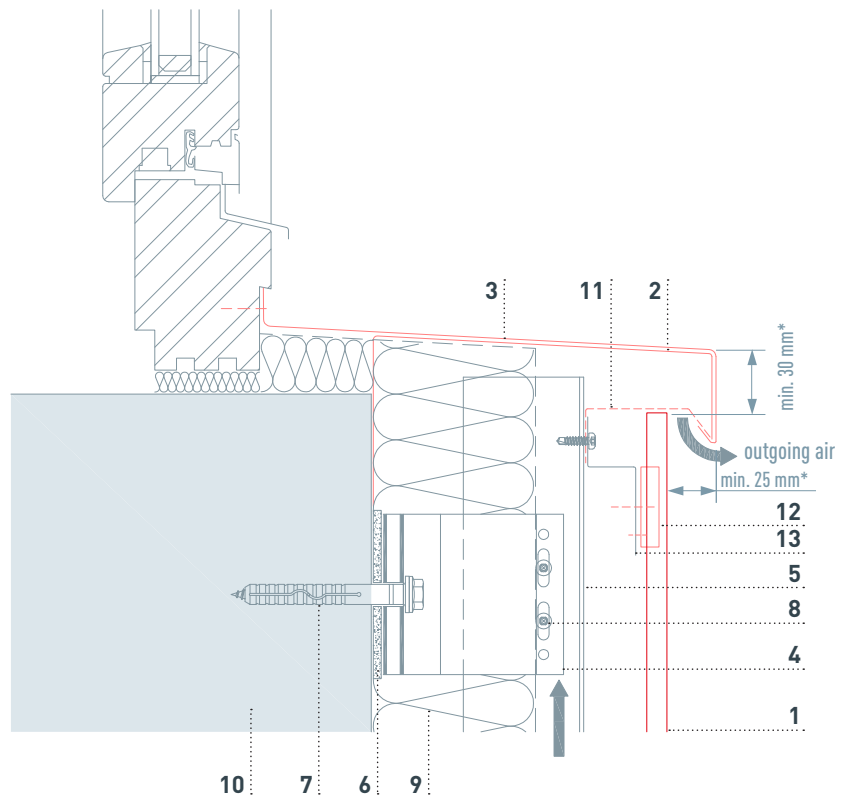
## BOTTOM CONNECTION

- 1 ripple profile 10/47/2.0 mm (PREFA)
- 2 drip (PREFA)
- 3 sliding clip for ripple profile (PREFA)
- 4 perforated metal plate (canted)
- 5 cover flashing
- 6 insertion profile (PREFA)
- 7 spacer bracket
- 8 support profile
- 9 thermal break
- 10 fastener driven into the supporting structure
- 11 connection screw
- 12 insulation
- 13 supporting structure
- 14 Z-profile



## WINDOW LEDGE

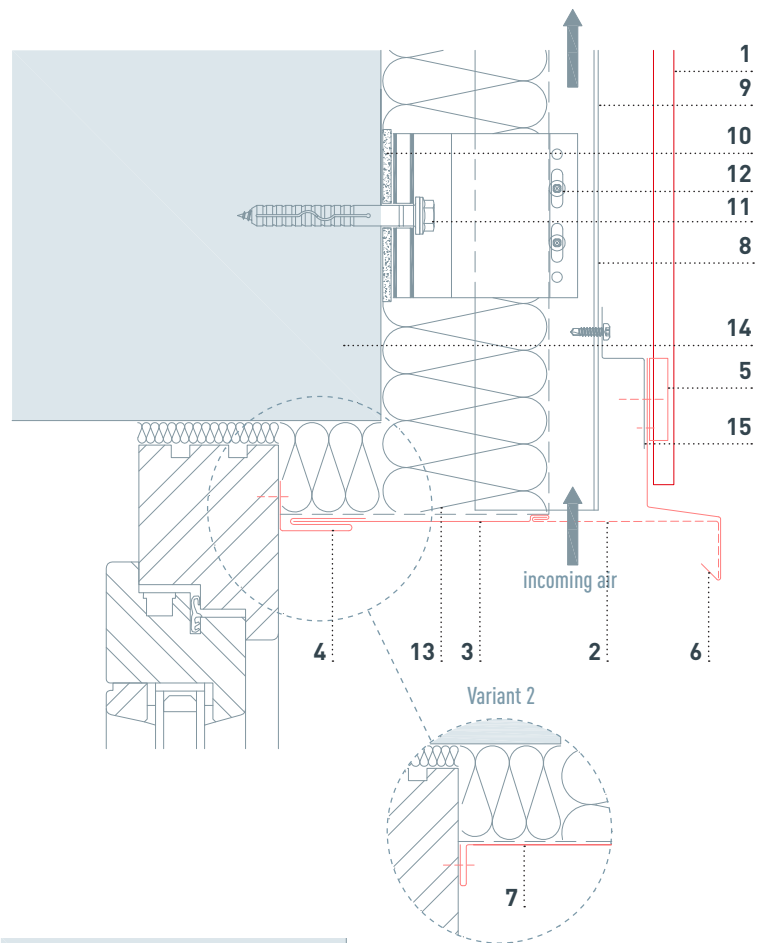
- 1 ripple profile 10/47/2.0 mm (PREFA)
- 2 continuous pre-formed supporting flashing strip
- 3 window ledge
- 4 spacer bracket
- 5 support profile
- 6 thermal break
- 7 fastener driven into the supporting structure
- 8 connection screw
- 9 insulation
- 10 supporting structure
- 11 perforated metal plate (canted)
- 12 sliding clip for ripple profile (PREFA)
- 13 Z-profile



\* National standards and guidelines must be taken into account.

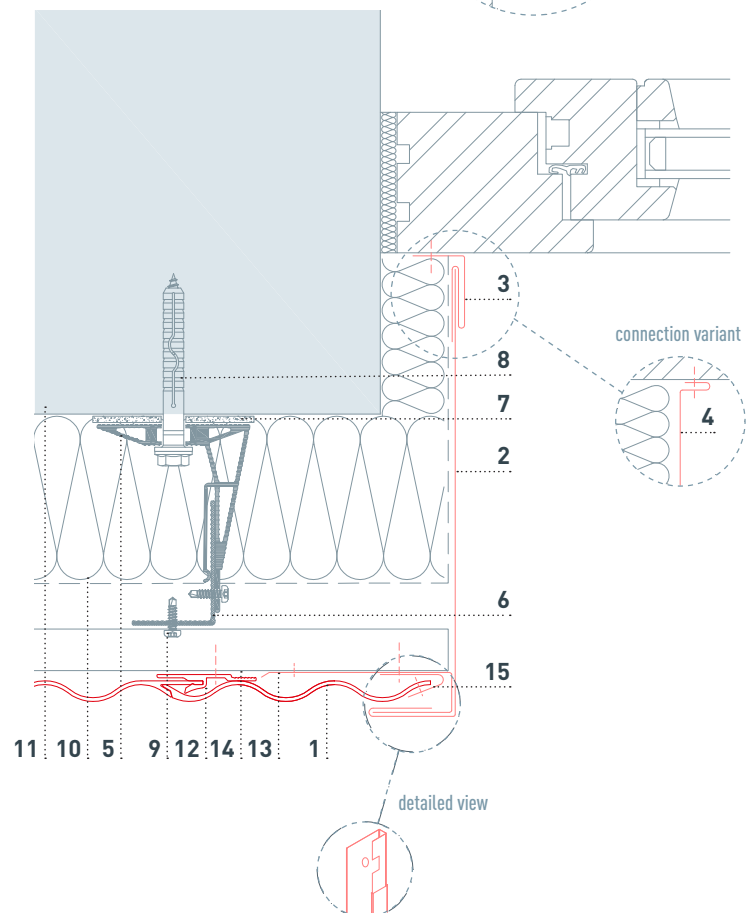
## WINDOW LINTEL

- 1 ripple profile 10/47/2.0 mm (PREFA)
- 2 perforated metal plate (canted)
- 3 cover flashing
- 4 insertion profile (PREFA)
- 5 sliding clip for ripple profile (PREFA)
- 6 drip
- 7 connection variant
- 8 spacer bracket
- 9 support profile
- 10 thermal break
- 11 fastener driven into the supporting structure
- 12 connection screw
- 13 insulation
- 14 supporting structure
- 15 Z-profile



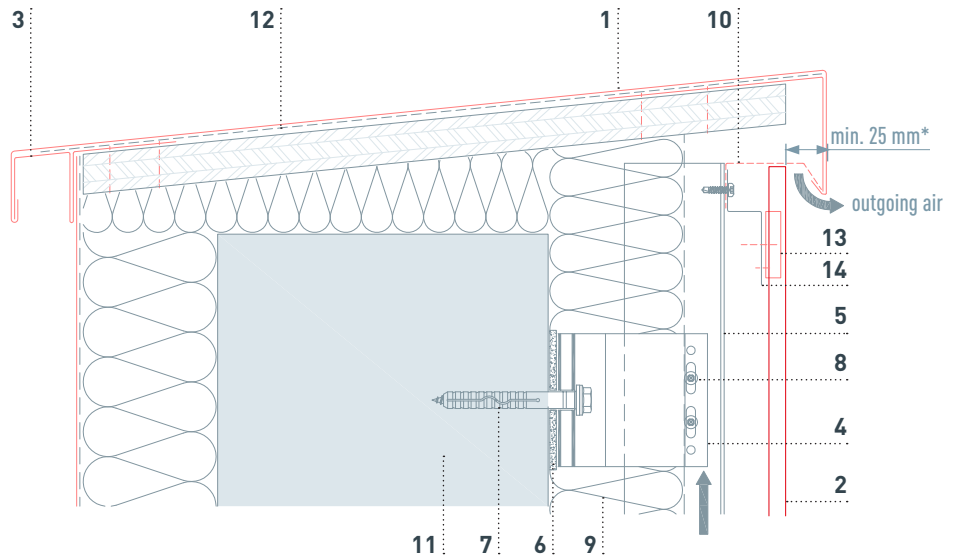
## WINDOW REVEAL

- 1 ripple profile 10/47/2.0 mm (PREFA)
- 2 jamb flashing
- 3 insertion profile (PREFA)
- 4 connection variant
- 5 spacer bracket
- 6 support profile
- 7 thermal break
- 8 fastener driven into the supporting structure
- 9 connection screw
- 10 insulation
- 11 supporting structure
- 12 sliding clip for ripple profile (PREFA)
- 13 channel profile
- 14 Z-profile
- 15 double-lock clip



## TOP CONNECTION

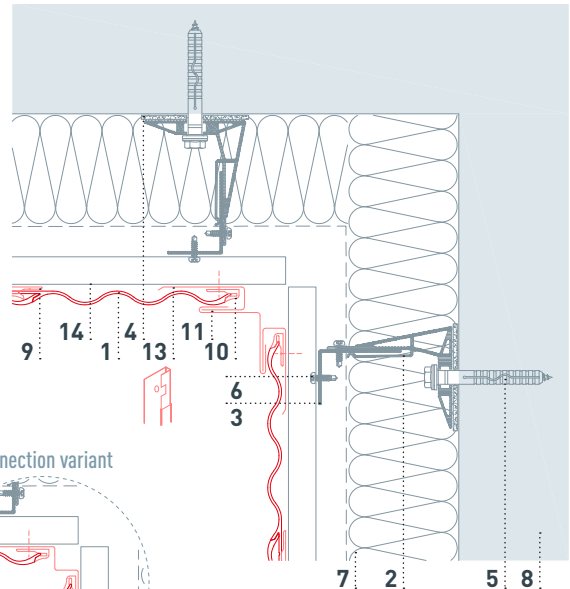
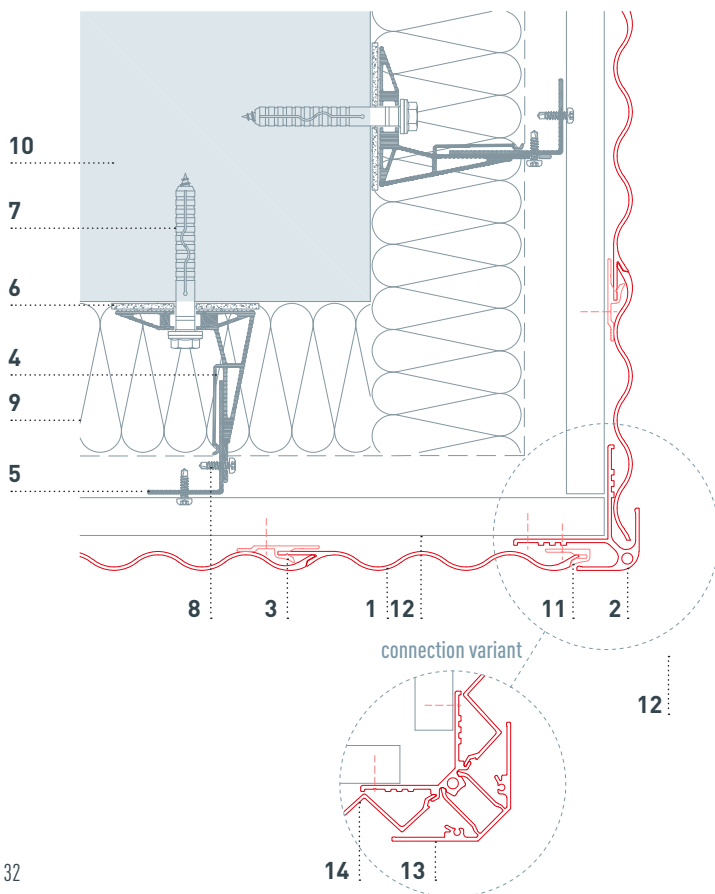
- 1 roof parapet
- 2 ripple profile 10/47/2.0 mm (PREFA)
- 3 cleat strip
- 4 spacer bracket
- 5 support profile
- 6 thermal break
- 7 fastener driven into the supporting structure
- 8 connection screw
- 9 insulation
- 10 perforated metal plate (canted)
- 11 supporting structure
- 12 separation layer
- 13 sliding clip for ripple profile (PREFA)
- 14 Z-profile



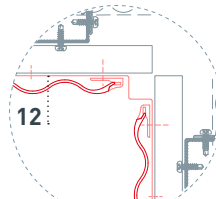
\* National standards and guidelines must be taken into account.

## EXTERNAL CORNER

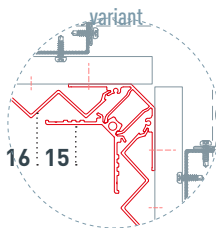
- 1 ripple profile 10/47/2.0 mm (PREFA)
- 2 external corner for ripple profile (PREFA)
- 3 sliding clip for ripple profile (PREFA)
- 4 spacer bracket
- 5 support profile
- 6 thermal break
- 7 fastener driven into the supporting structure
- 8 connection screw
- 9 insulation
- 10 supporting structure
- 11 starter profile (PREFA)
- 12 Z-profile
- 13 corner profile for serrated profile (PREFA)
- 14 serrated profile 22/40/2.0 mm (PREFA)



connection variant



connection variant



- 7 insulation
- 8 supporting structure
- 9 sliding clip for ripple profile (PREFA)
- 10 starter profile for ripple profile (PREFA)
- 11 canted internal corner (version 1)
- 12 canted internal corner (version 2)

## INTERNAL CORNER

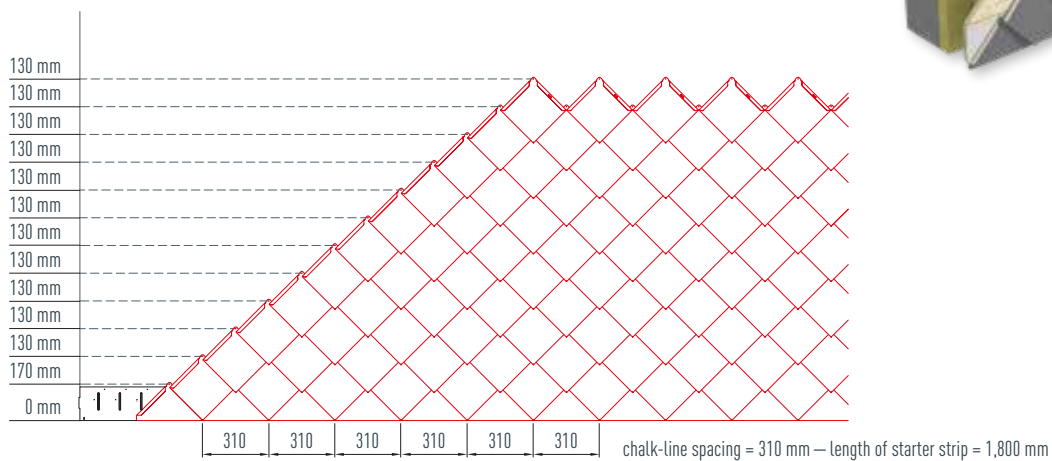
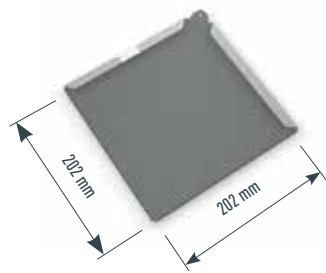
- 1 ripple profile 10/47/2.0 mm (PREFA)
- 2 spacer bracket
- 3 support profile
- 4 thermal break
- 5 fastener driven into the supporting structure
- 6 connection screw

- 13 channel profile
- 14 Z-profile
- 15 corner profile for serrated profile (PREFA)
- 16 serrated profile 22/40/2.0 mm (PREFA)

# APPLICATION — RHOMBOID FAÇADE TILE 20 × 20

## RHOMBOID FAÇADE TILE 20 × 20

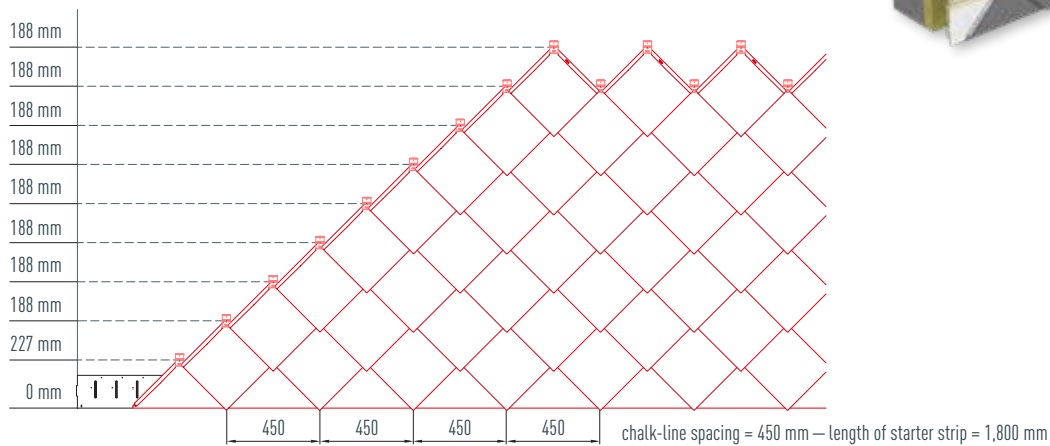
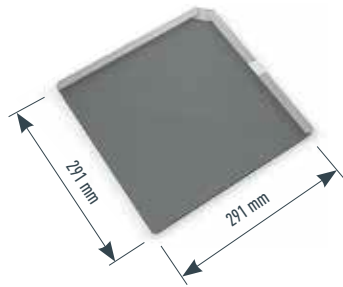
MATERIAL	coil-coated or powder-coated aluminium, 0.7 mm thick
FASTENING	screwed down or directly nailed once for each rhomboid façade tile
SIZE	200 × 200 × 0,7 mm (cover)
WEIGHT	2.8 kg/m <sup>2</sup>
REQUIREMENT	approx. 25 pc.
INSTALLATION	on fully boarded substrate (at least 24 mm)



# APPLICATION — RHOMBOID FAÇADE TILE 29 × 29

## RHOMBOID FAÇADE TILE 29 × 29

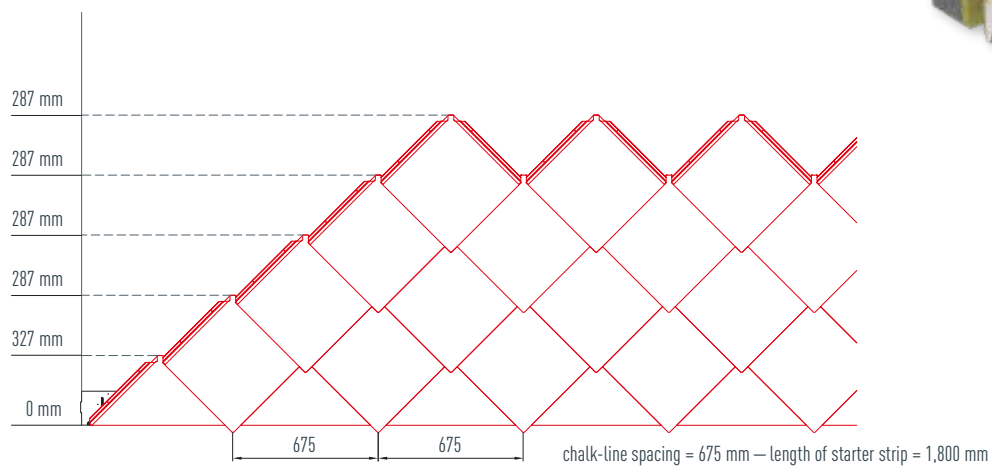
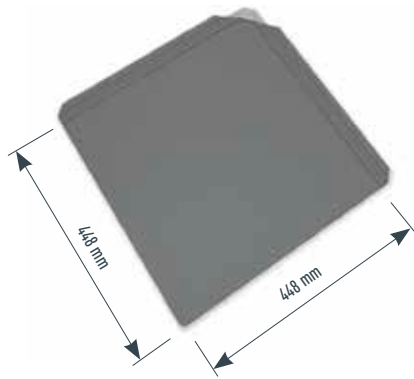
MATERIAL	coil-coated aluminium, 0.7 mm thick
FASTENING	screwed down or nailed with 1 rhomboid façade tile clip for each rhomboid façade tile
SIZE	290 × 290 mm (cover)
WEIGHT	approx. 2.6 kg/m <sup>2</sup>
REQUIREMENT	approx. 12 pc.
INSTALLATION	on fully boarded substrate (at least 24 mm)



# APPLICATION — RHOMBOID FAÇADE TILE 44 × 44

## RHOMBOID FAÇADE TILE 44 × 44

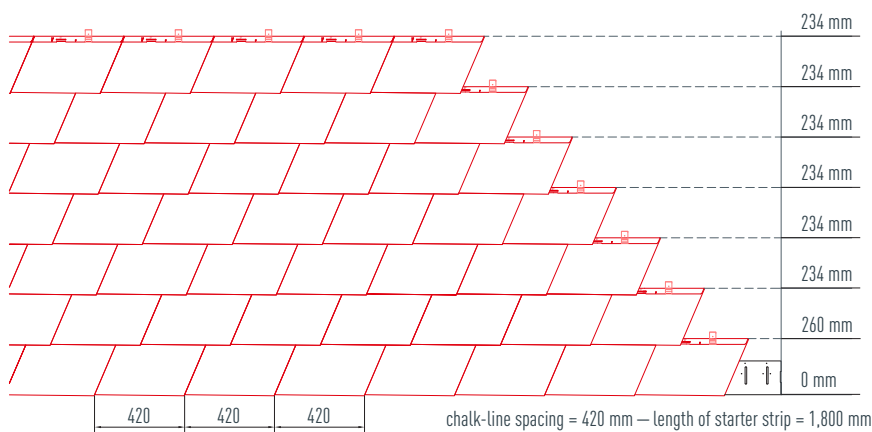
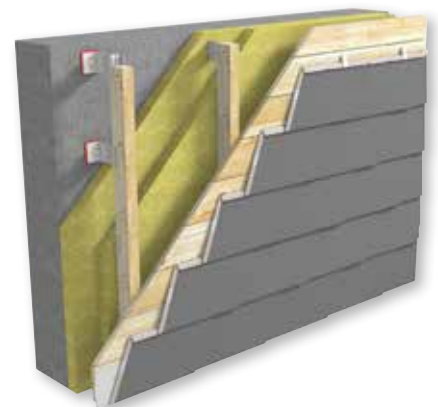
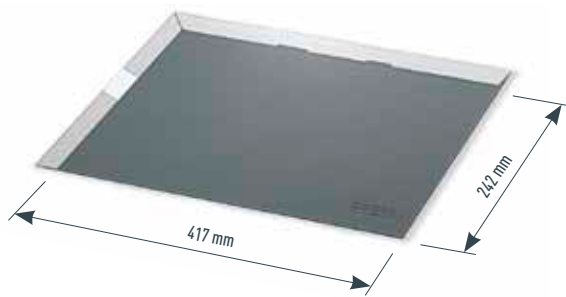
MATERIAL	coil-coated aluminium, 0.7 mm thick
FASTENING	screwed down or directly nailed four times for each rhomboid façade tile
SIZE	437 × 437 mm (cover)
WEIGHT	approx. 2.6 kg/m <sup>2</sup>
REQUIREMENT	approx. 5 pc.
INSTALLATION	on fully boarded substrate (at least 24 mm)



# APPLICATION — FAÇADE SHINGLE

## FAÇADE SHINGLE

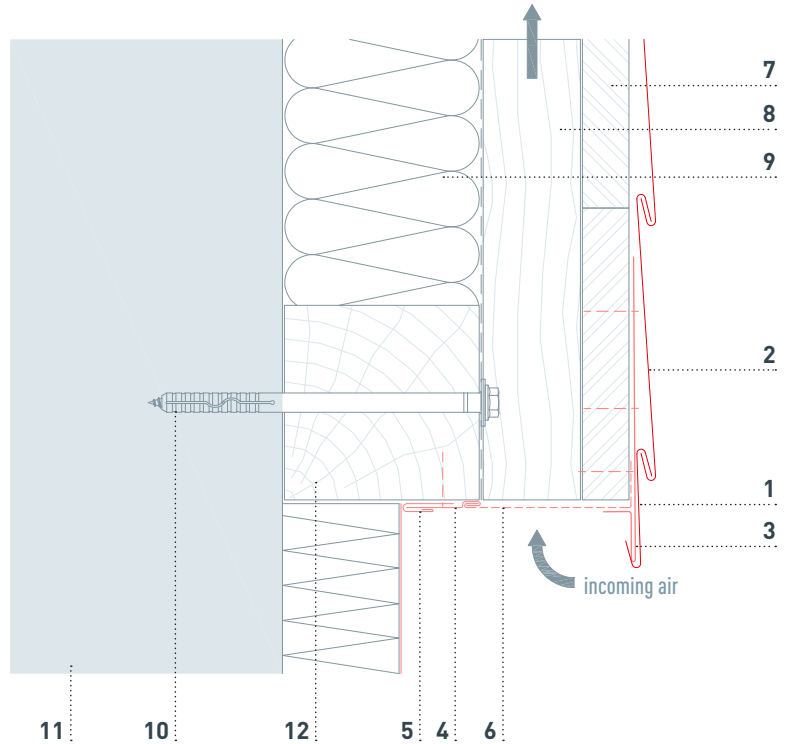
MATERIAL	coil-coated aluminium, 0.7 mm thick
FASTENING	screwed down or nailed with 1 patent clip for each shingle
SIZE	420 × 240 mm (cover)
WEIGHT	approx. 2.5 kg/m <sup>2</sup>
REQUIREMENT	approx. 10 pc.
INSTALLATION	on fully boarded substrate (at least 24 mm)



# APPLICATION — RHOMBOID FAÇADE TILE

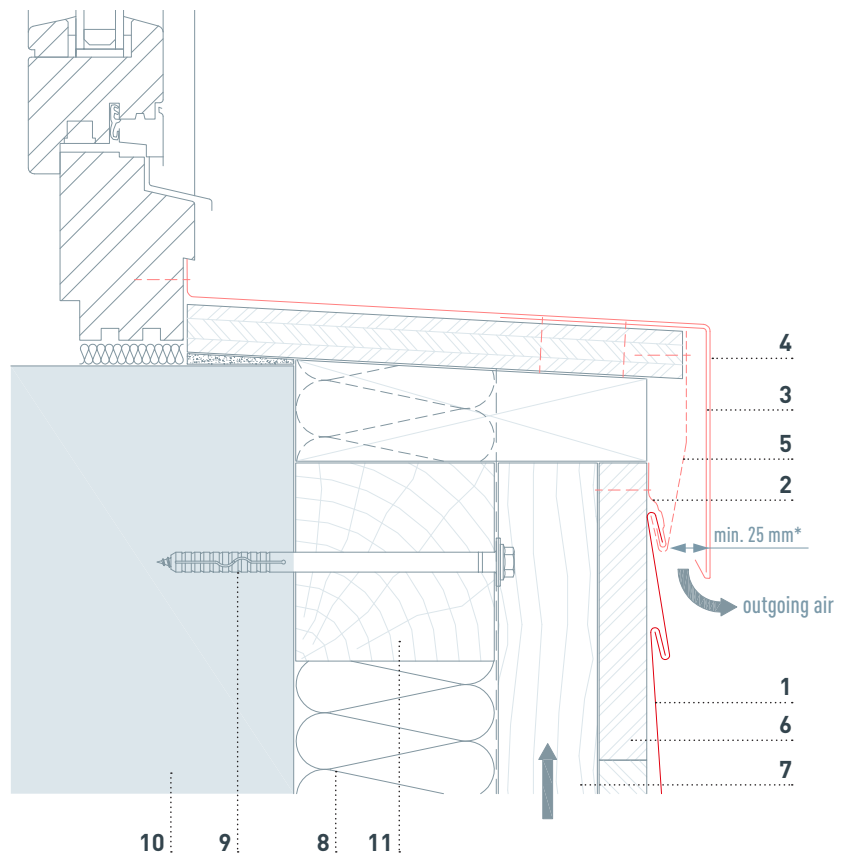
## BOTTOM CONNECTION

- 1 leading plate for rhomboid façade tile
- 2 rhomboid façade tile
- 3 starter strip for rhomboid façade tile
- 4 cover flashing
- 5 insertion profile (PREFA)
- 6 perforated metal plate (canted)
- 7 fully boarded substrate (at least 24 mm)
- 8 counter batten
- 9 insulation
- 10 fastener driven into the supporting structure
- 11 supporting structure
- 12 nogging piece



## WINDOW LEDGE

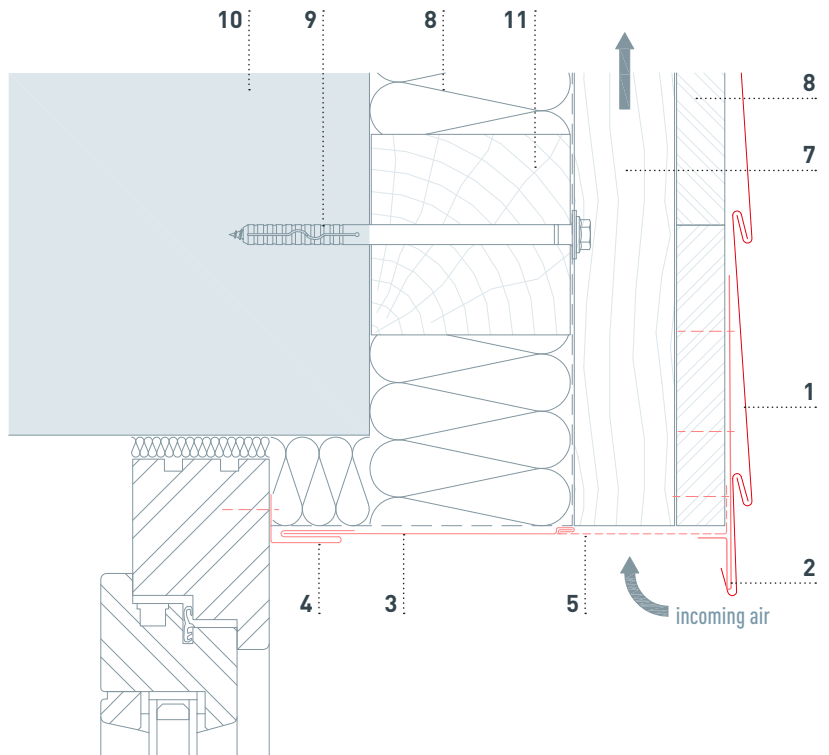
- 1 rhomboid façade tile
- 2 rhomboid façade tile clip
- 3 continuous pre-formed supporting flashing strip
- 4 window ledge
- 5 perforated metal plate (canted)
- 6 fully boarded substrate (at least 24 mm)
- 7 counter batten
- 8 insulation
- 9 fastener driven into the supporting structure
- 10 supporting structure
- 11 nogging piece



\* National standards and guidelines must be taken into account.

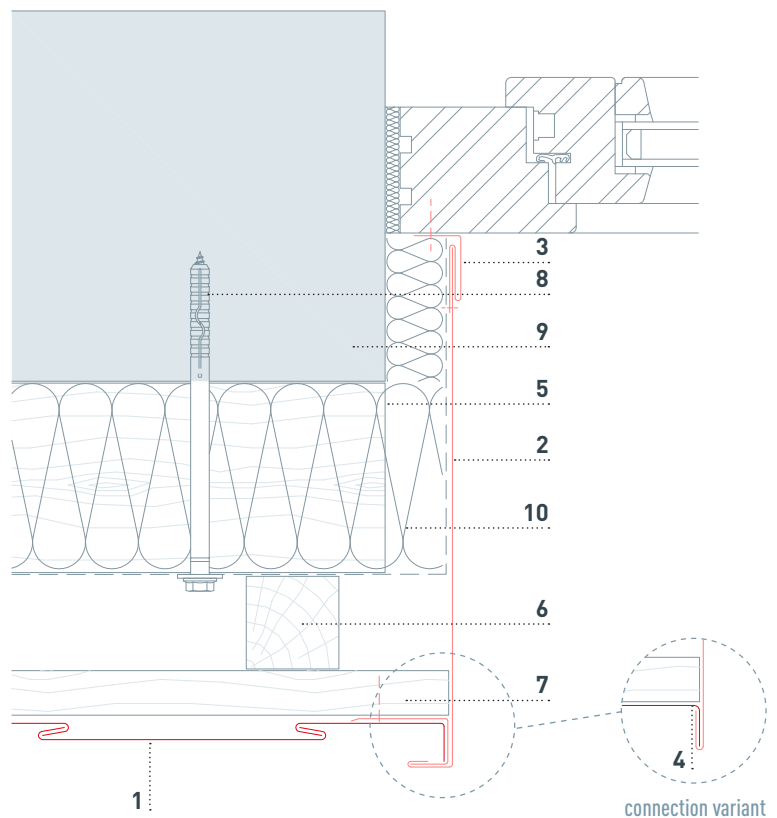
## WINDOW LINTEL

- 1 rhomboid façade tile
- 2 starter strip for rhomboid façade tile
- 3 cover flashing
- 4 insertion profile (PREFA)
- 5 perforated metal plate (canted)
- 6 fully boarded substrate (at least 24 mm)
- 7 counter batten
- 8 insulation
- 9 fastener driven into the supporting structure
- 10 supporting structure
- 11 nogging piece



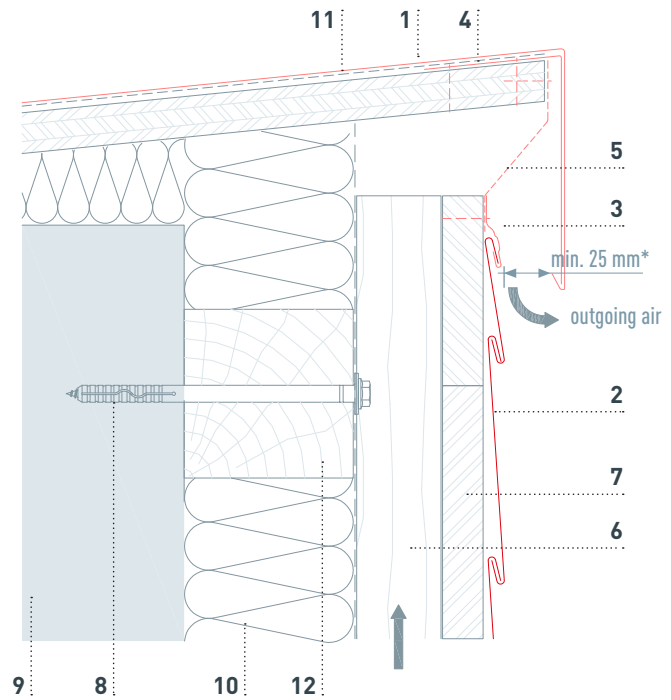
## WINDOW REVEAL

- 1 rhomboid façade tile
- 2 jamb flashing
- 3 insertion profile (PREFA)
- 4 connection variant
- 5 nogging piece
- 6 counter batten
- 7 fully boarded substrate (at least 24 mm)
- 8 fastener driven into the supporting structure
- 9 supporting structure
- 10 insulation



## TOP CONNECTION

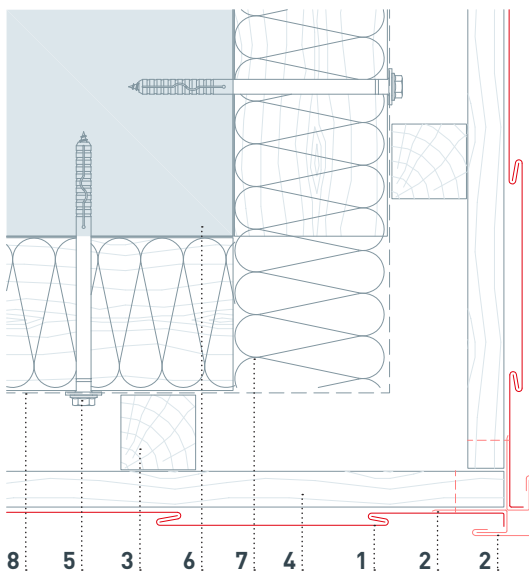
- 1 roof parapet
- 2 rhomboid façade tile
- 3 rhomboid façade tile clip
- 4 cleat strip
- 5 perforated metal plate (canted)
- 6 counter batten
- 7 fully boarded substrate (at least 24 mm)
- 8 fastener driven into the supporting structure
- 9 supporting structure
- 10 insulation
- 11 separation layer
- 12 nogging piece



\* National standards and guidelines must be taken into account.

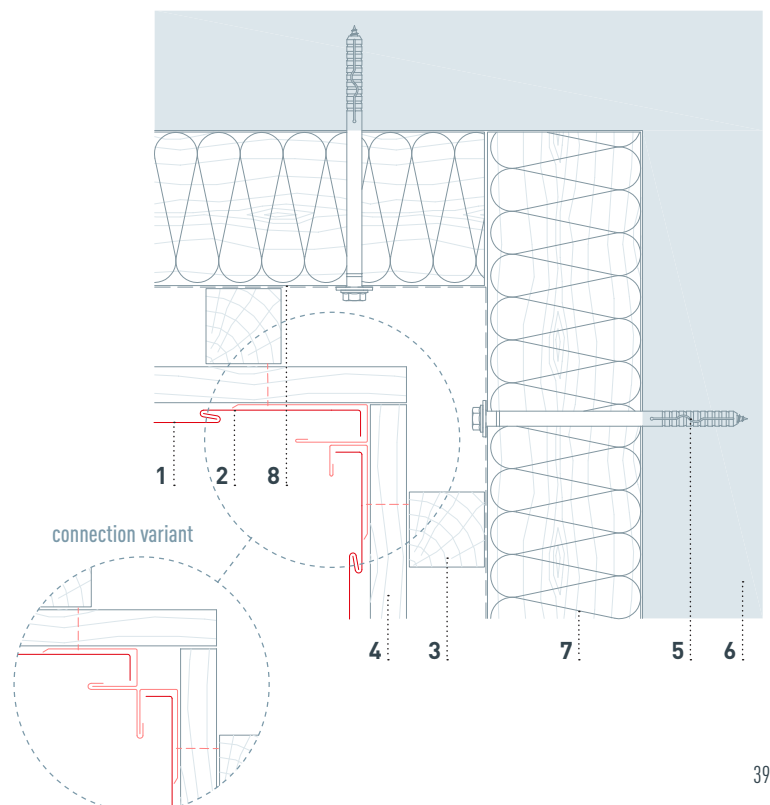
## EXTERNAL CORNER

- 1 rhomboid façade tile
- 2 external corner (canted; several elements)
- 3 counter batten
- 4 fully boarded substrate (at least 24 mm)
- 5 fastener driven into the supporting structure
- 6 supporting structure
- 7 insulation
- 8 nogging piece



## INTERNAL CORNER

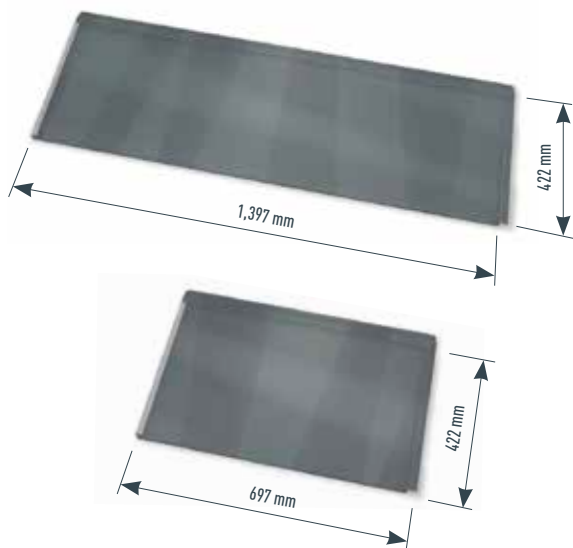
- 1 rhomboid façade tile
- 2 canted internal corner (several elements)
- 3 counter batten
- 4 fully boarded substrate (at least 24 mm)
- 5 fastener driven into the supporting structure
- 6 supporting structure
- 7 insulation
- 8 nogging piece



# APPLICATION — FX.12 FAÇADE PANEL

## FX.12 FAÇADE PANEL

MATERIAL	coil-coated aluminium, 0.7 mm thick
FASTENING	screwed down or nailed
WEIGHT	1 m <sup>2</sup> = approxa. 2,3 kg
SIZE	700 × 420 mm (3.4 pc./m <sup>2</sup> ) and 1,400 × 420 mm (1.7 pc./m <sup>2</sup> ) — cover
INSTALLATION	on fully boarded substrate (at least 24 mm) or on skip sheathing (at least 24 mm)



### Note:

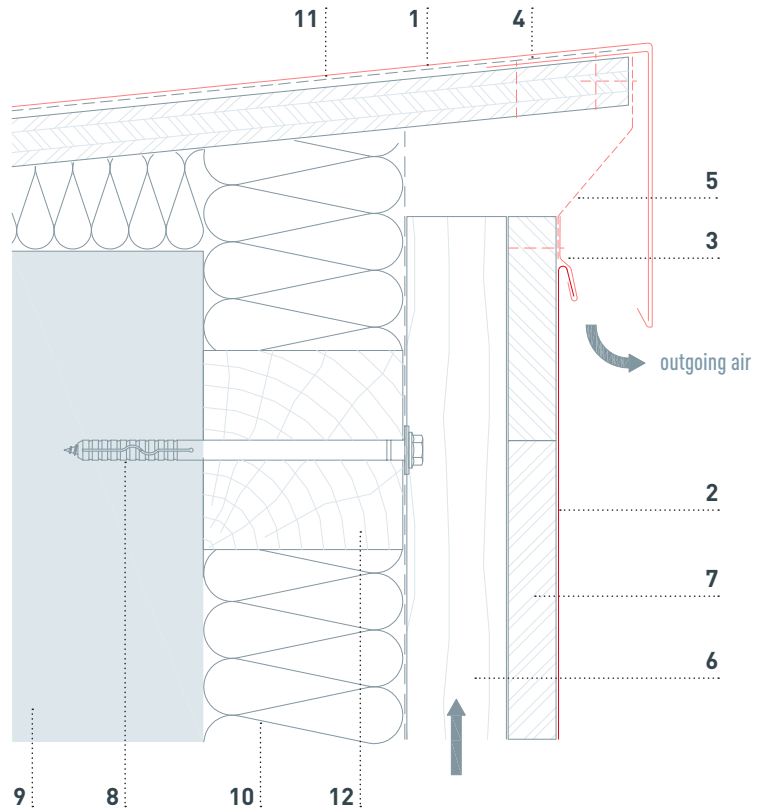
Ratio large to small: 2:1 items

To obtain an individual appearance over the whole surface area, vertical seams should not lie above one another (recommended minimum joint offset: 220 mm).

Installation examples are available as a guide and can be downloaded (in PDF or DWG format) from [www.prefa.com](http://www.prefa.com).

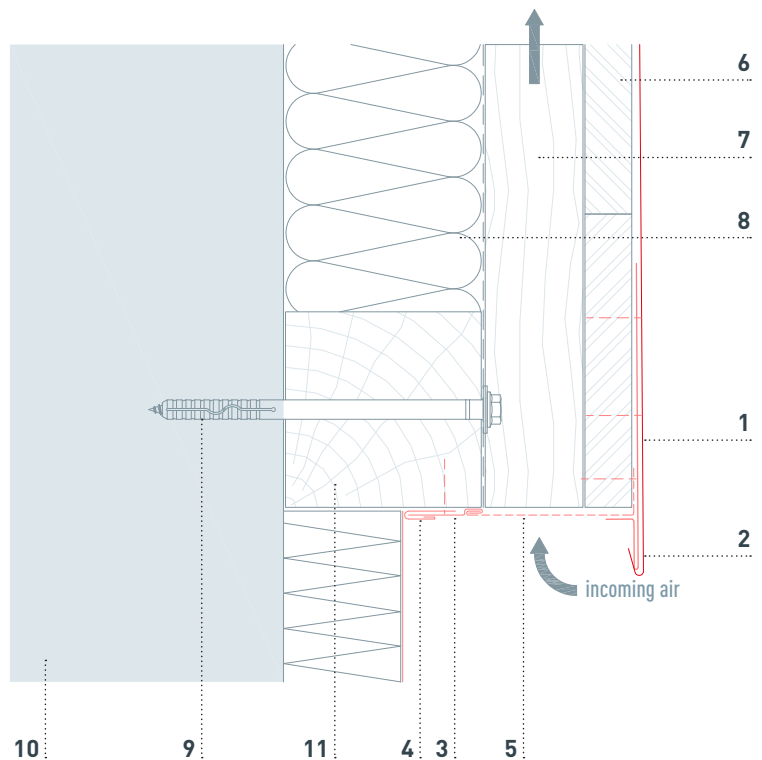
## TOP CONNECTION

- 1 roof parapet
- 2 FX.12 façade panel
- 3 clip
- 4 cleat strip
- 5 perforated metal plate (canted)
- 6 counter batten
- 7 fully boarded substrate (at least 24 mm)
- 8 fastener driven into the supporting structure
- 9 supporting structure
- 10 insulation
- 11 separation layer
- 12 nogging piece



## BOTTOM CONNECTION

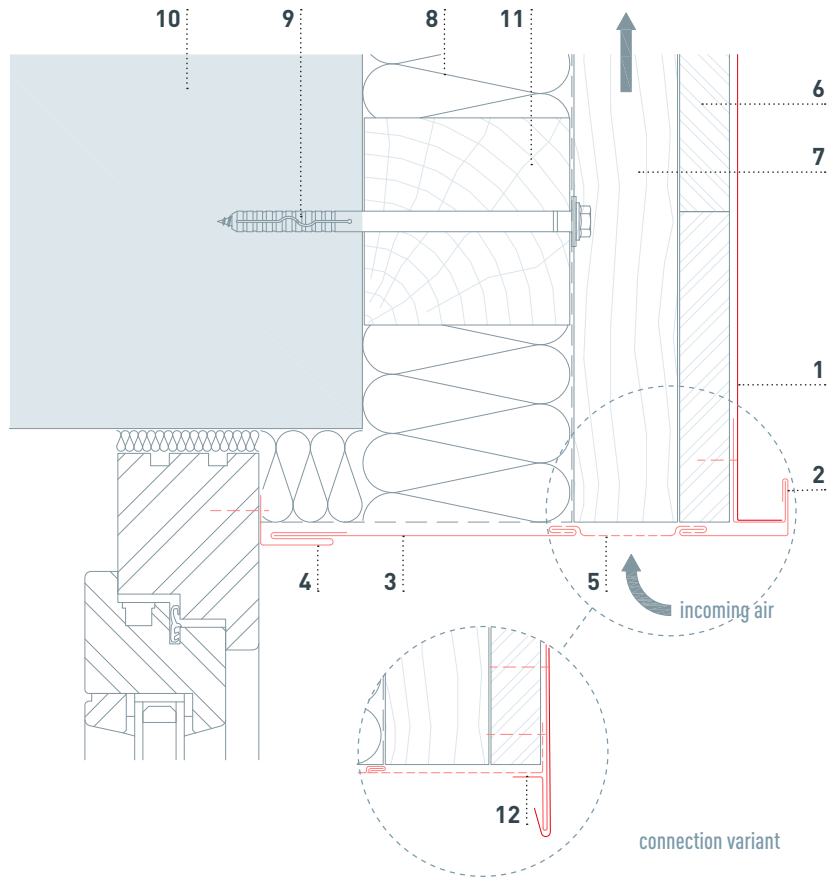
- 1 FX.12 façade panel
- 2 starter strip for FX.12 panel
- 3 cover flashing
- 4 insertion profile
- 5 perforated metal plate (canted)
- 6 fully boarded substrate (at least 24 mm)
- 7 counter batten
- 8 insulation
- 9 fastener driven into the supporting structure
- 10 supporting structure
- 11 nogging piece



# APPLICATION — FX.12 FAÇADE PANEL

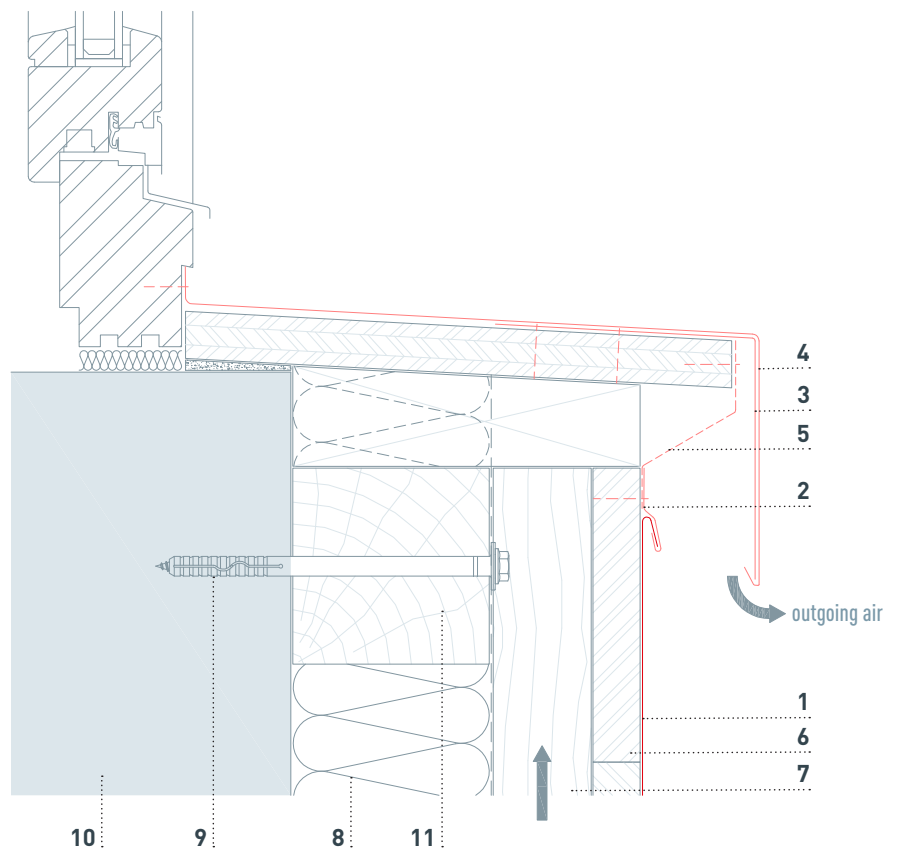
## WINDOW LINTEL

- 1 FX.12 façade panel
- 2 starter strip for FX.12 panel
- 3 cover flashing
- 4 insertion profile (PREFA)
- 5 perforated metal plate (canted)
- 6 fully boarded substrate (at least 24 mm)
- 7 counter batten
- 8 insulation
- 9 fastener driven into the supporting structure
- 10 supporting structure
- 11 nogging piece
- 12 channel profile



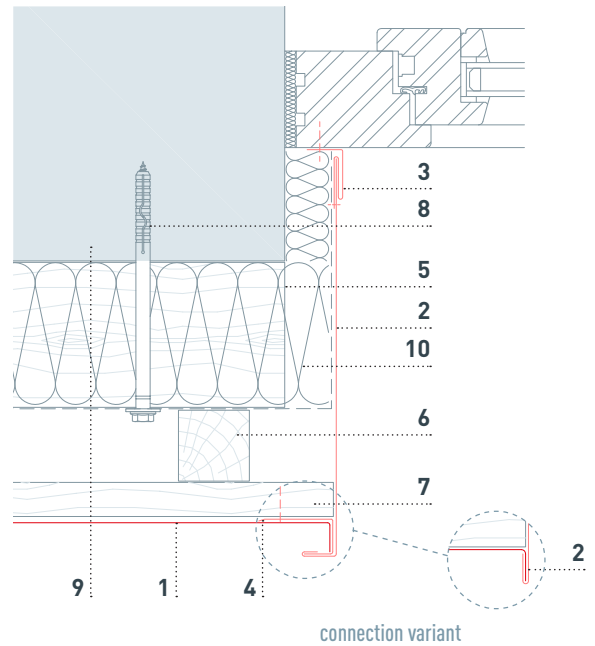
## WINDOW LEDGE

- 1 FX.12 façade panel
- 2 clip
- 3 continuous pre-formed supporting flashing strip
- 4 window ledge
- 5 perforated metal plate (canted)
- 6 fully boarded substrate (at least 24 mm)
- 7 counter batten
- 8 insulation
- 9 fastener driven into the supporting structure
- 10 supporting structure
- 11 nogging piece



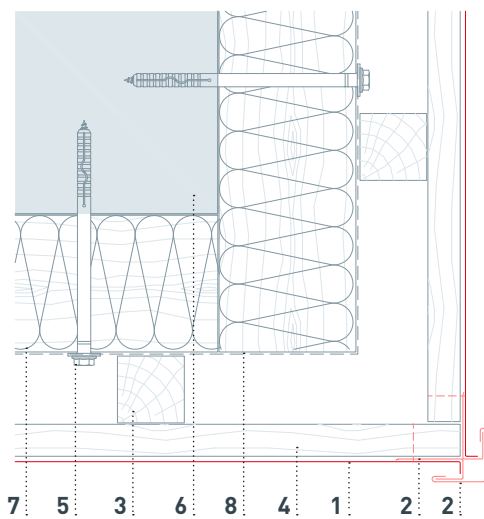
## WINDOW REVEAL

- 1 FX.12 façade panel
- 2 jamb flashing
- 3 insertion profile (PREFA)
- 4 fixing strip
- 5 nogging piece
- 6 counter batten
- 7 fully boarded substrate (at least 24 mm)
- 8 fastener driven into the supporting structure
- 9 supporting structure
- 10 insulation
- 11 channel profile



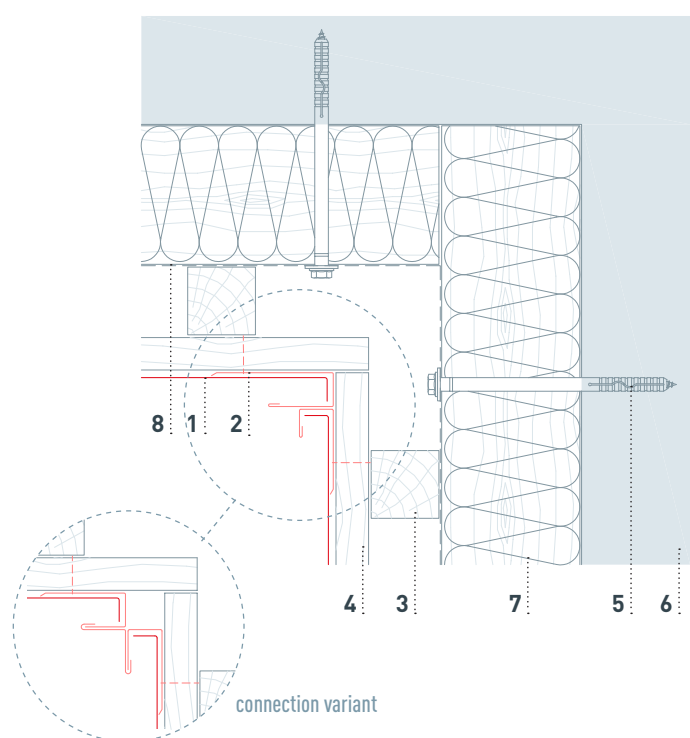
## EXTERNAL CORNER

- 1 FX.12 façade panel
- 2 external corner (canted; several elements)
- 3 counter batten
- 4 fully boarded substrate (at least 24 mm)
- 5 fastener driven into the supporting structure
- 6 supporting structure
- 7 insulation
- 8 nogging piece



## INTERNAL CORNER

- 1 FX.12 façade panel
- 2 channel profile
- 3 counter batten
- 4 fully boarded substrate (at least 24 mm)
- 5 fastener driven into the supporting structure
- 6 supporting structure
- 7 insulation
- 8 nogging piece



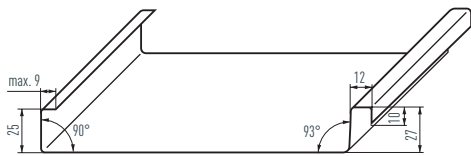
# APPLICATION — SINGLE LOCK STANDING SEAM

## PREFALZ

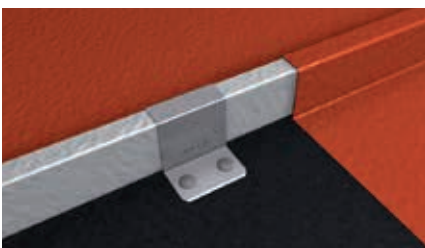
**DIMENSIONS** 0.70 × 500 mm (centre-to-centre seam distance: 430 mm)  
0.70 × 1,000 mm (complementary coil)

**MATERIAL** coil-coated aluminium, 0.7 mm thick

**STANDARD DIMENSIONS** 60 kg (inside diameter = 320 mm): approx. 63 m  
(for a strip width of 500 mm) 500 kg (inside diameter = 500 mm): approx. 529 m



## PREFALZ



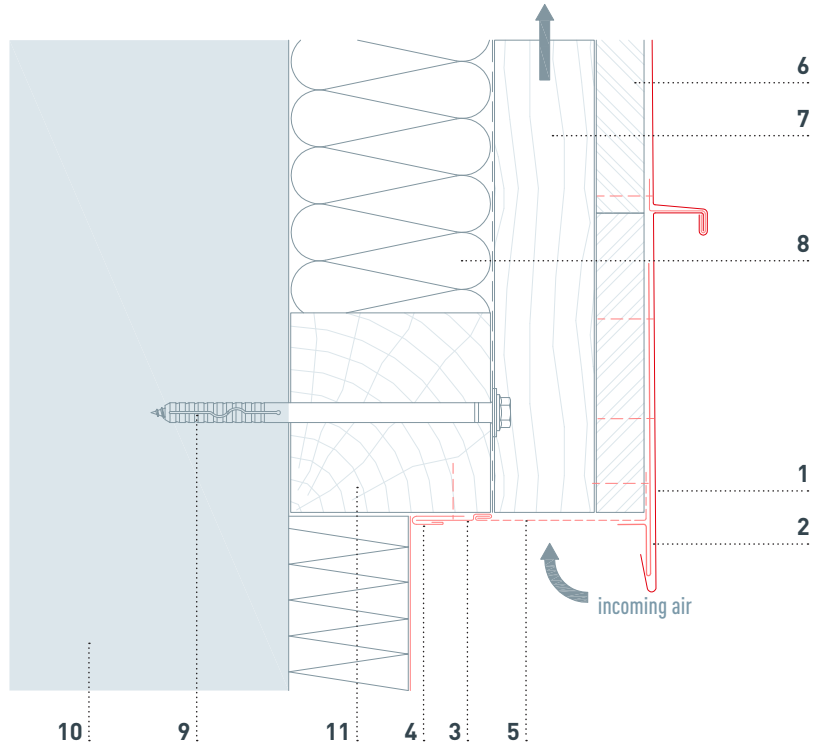
preformed fixed clip

sliding clip

# APPLICATION — SINGLE LOCK STANDING SEAM (HORIZONTAL)

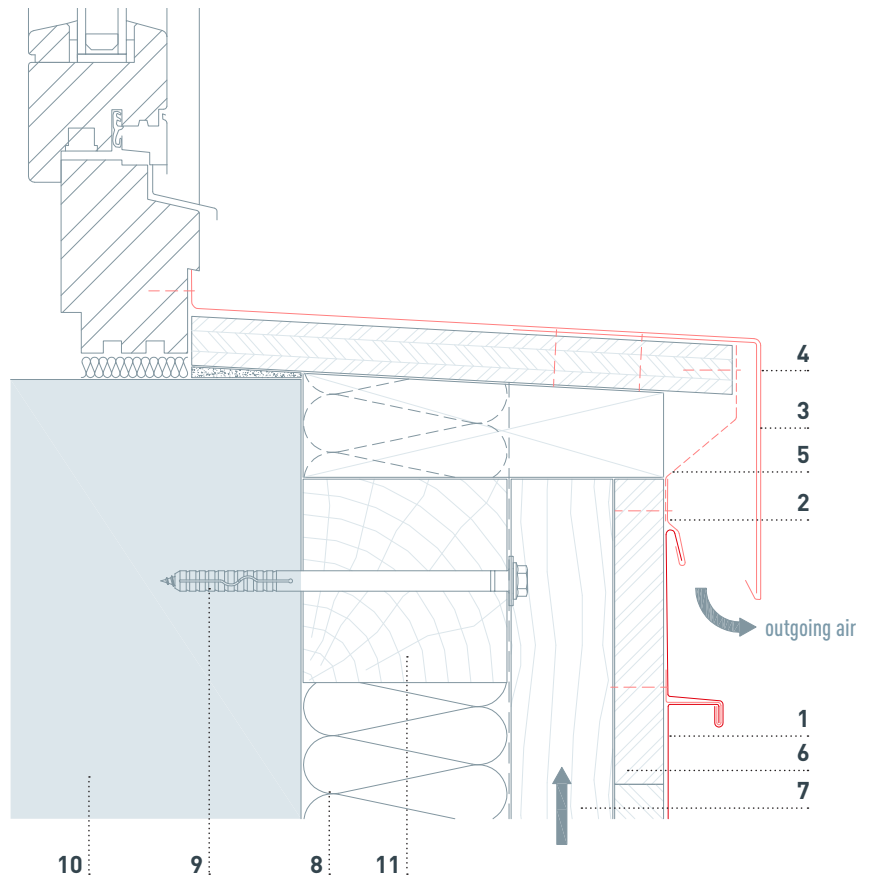
## BOTTOM CONNECTION

- 1 PREFALZ single lock standing seam
- 2 starter strip
- 3 cover flashing
- 4 insertion profile (PREFA)
- 5 perforated metal plate (canted)
- 6 fully boarded substrate (at least 24 mm)
- 7 counter batten
- 8 insulation
- 9 fastener driven into the supporting structure
- 10 supporting structure
- 11 nogging piece



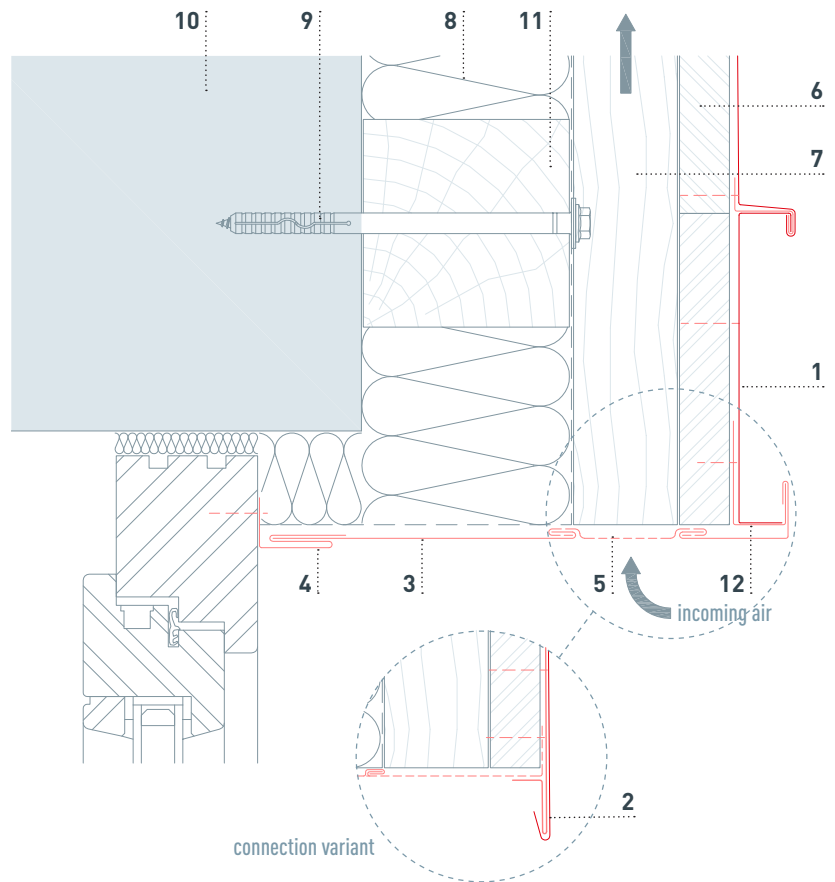
## WINDOW LEDGE

- 1 PREFALZ single lock standing seam
- 2 clip
- 3 continuous pre-formed supporting flashing strip
- 4 window ledge
- 5 perforated metal plate (canted)
- 6 fully boarded substrate (at least 24 mm)
- 7 counter batten
- 8 insulation
- 9 fastener driven into the supporting structure
- 10 supporting structure
- 11 nogging piece



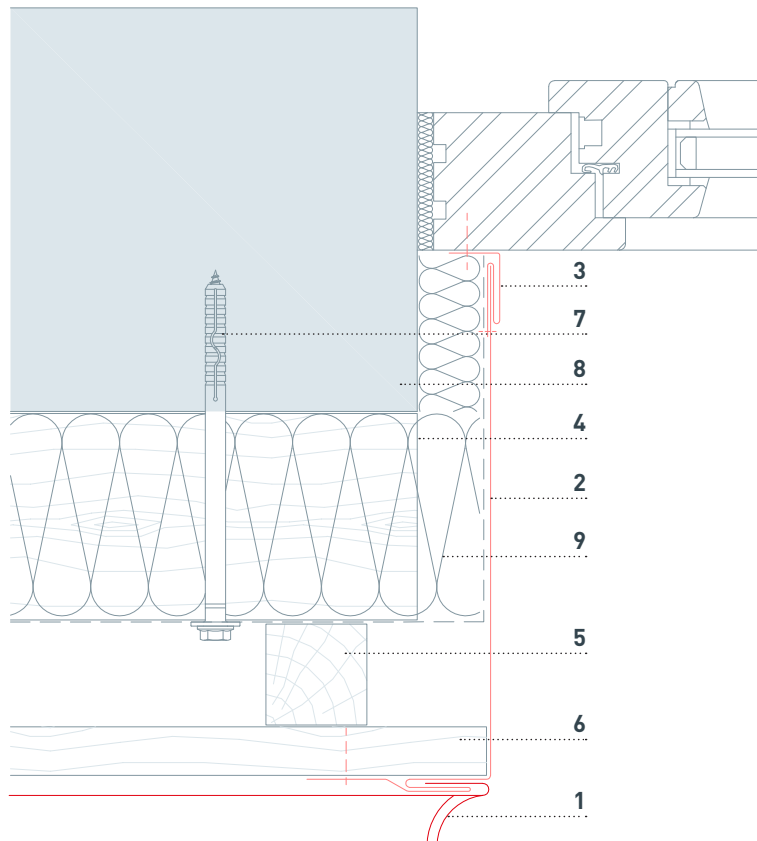
## WINDOW LINTEL

- 1 PREFALZ single lock standing seam
- 2 starter strip
- 3 cover flashing
- 4 insertion profile (PREFA)
- 5 perforated metal plate (canted)
- 6 fully boarded substrate (at least 24 mm)
- 7 counter batten
- 8 insulation
- 9 fastener driven into the supporting structure
- 10 supporting structure
- 11 nogging piece
- 12 channel profile



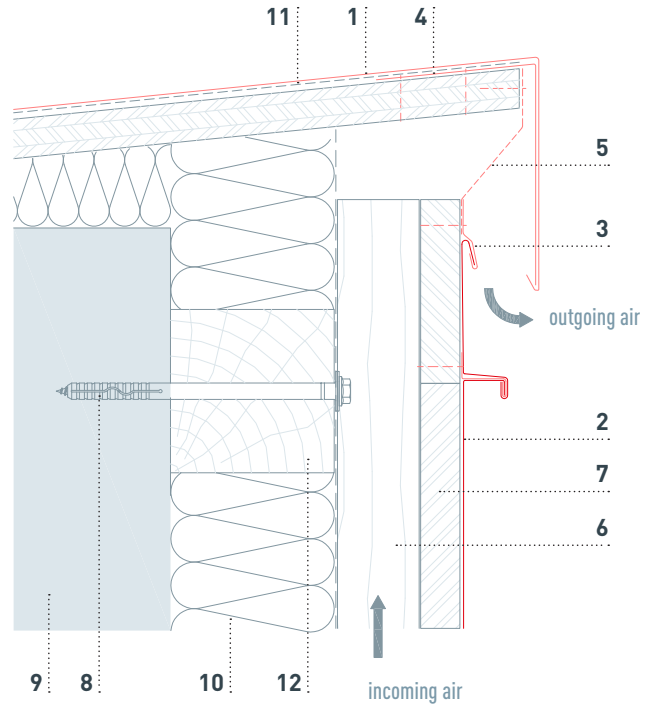
## WINDOW REVEAL

- 1 PREFALZ single lock standing seam
- 2 jamb flashing
- 3 insertion profile (PREFA)
- 4 nogging piece
- 5 counter batten
- 6 fully boarded substrate (at least 24 mm)
- 7 fastener driven into the supporting structure
- 8 supporting structure
- 9 insulation



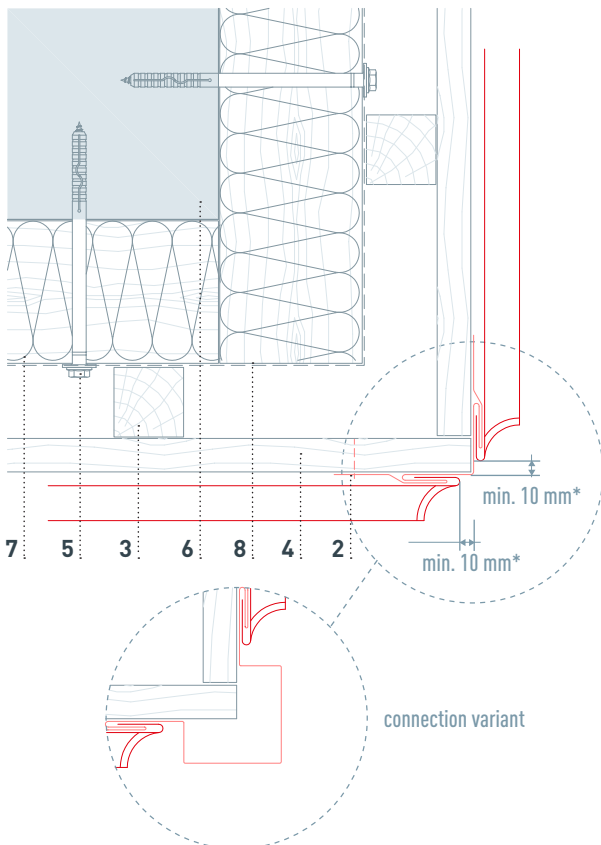
## TOP CONNECTION

- 1 roof parapet
- 2 PREFALZ single lock standing seam
- 3 clip
- 4 cleat strip
- 5 perforated metal plate (canted)
- 6 counter batten
- 7 fully boarded substrate (at least 24 mm)
- 8 fastener driven into the supporting structure
- 9 supporting structure
- 10 insulation
- 11 separation layer
- 12 nogging piece



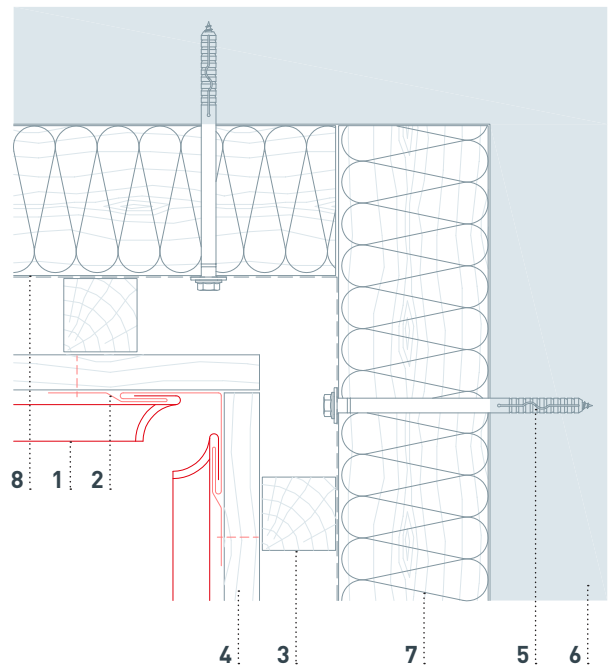
## EXTERNAL CORNER

- 1 PREFALZ single lock standing seam
- 2 external corner (canted)
- 3 counter batten
- 4 fully boarded substrate (at least 24 mm)
- 5 fastener driven into the supporting structure
- 6 supporting structure
- 7 insulation
- 8 nogging piece



## INTERNAL CORNER

- 1 PREFALZ single lock standing seam
- 2 internal corner (canted)
- 3 counter batten
- 4 fully boarded substrate (at least 24 mm)
- 5 fastener driven into the supporting structure
- 6 supporting structure
- 7 insulation
- 8 nogging piece

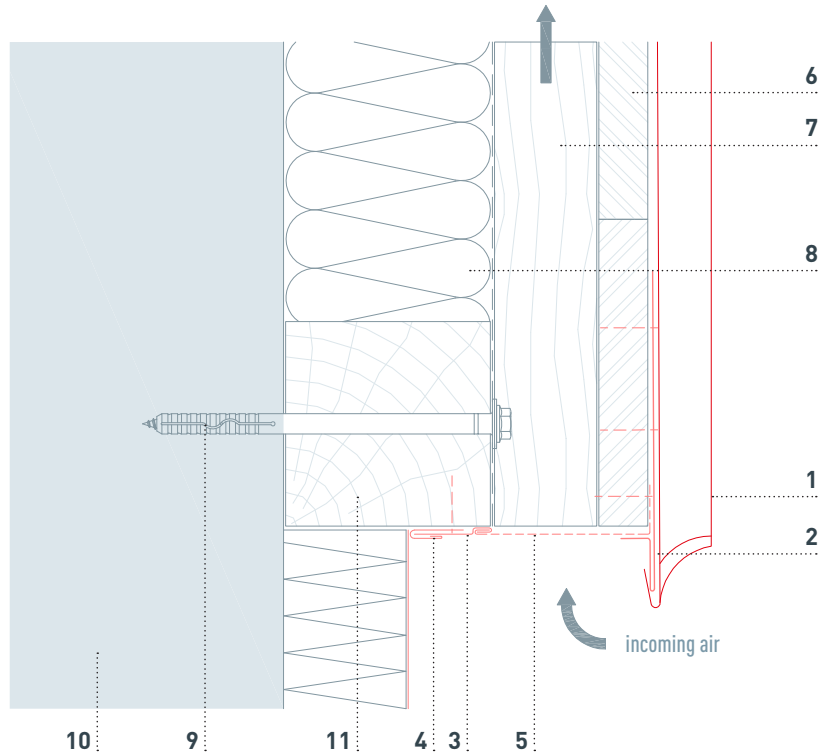


\* National standards and guidelines must be taken into account.

# APPLICATION — SINGLE LOCK STANDING SEAM (VERTICAL)

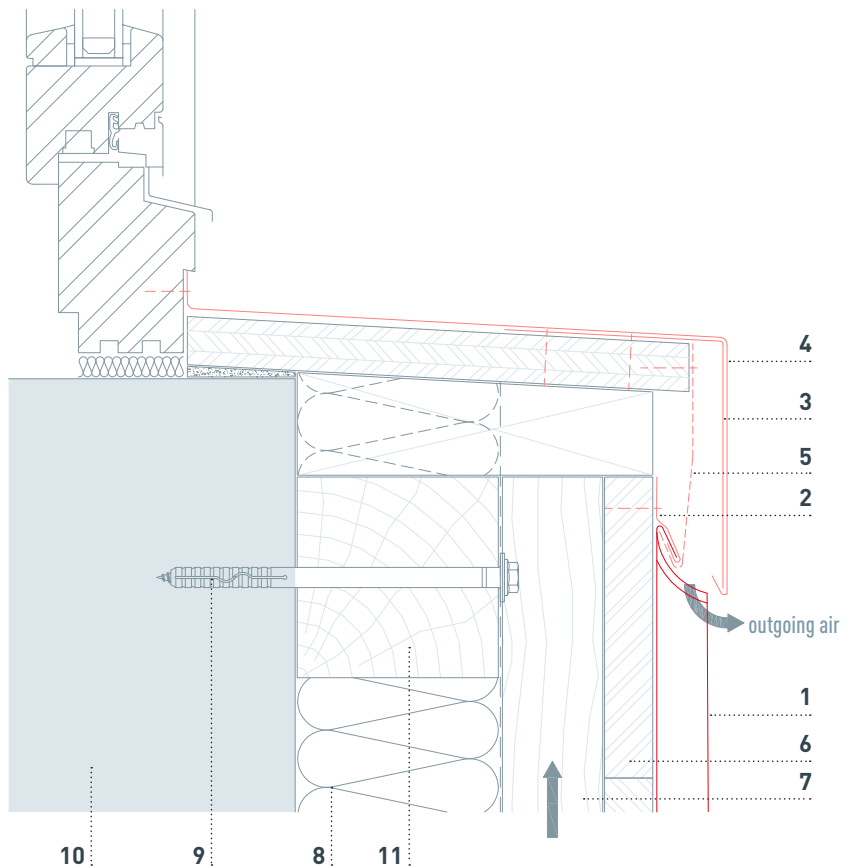
## BOTTOM CONNECTION

- 1 PREFALZ single lock standing seam
- 2 starter strip
- 3 cover flashing
- 4 insertion profile (PREFA)
- 5 perforated metal plate (canted)
- 6 fully boarded substrate (at least 24 mm)
- 7 counter batten
- 8 insulation
- 9 fastener driven into the supporting structure
- 10 supporting structure
- 11 nogging piece



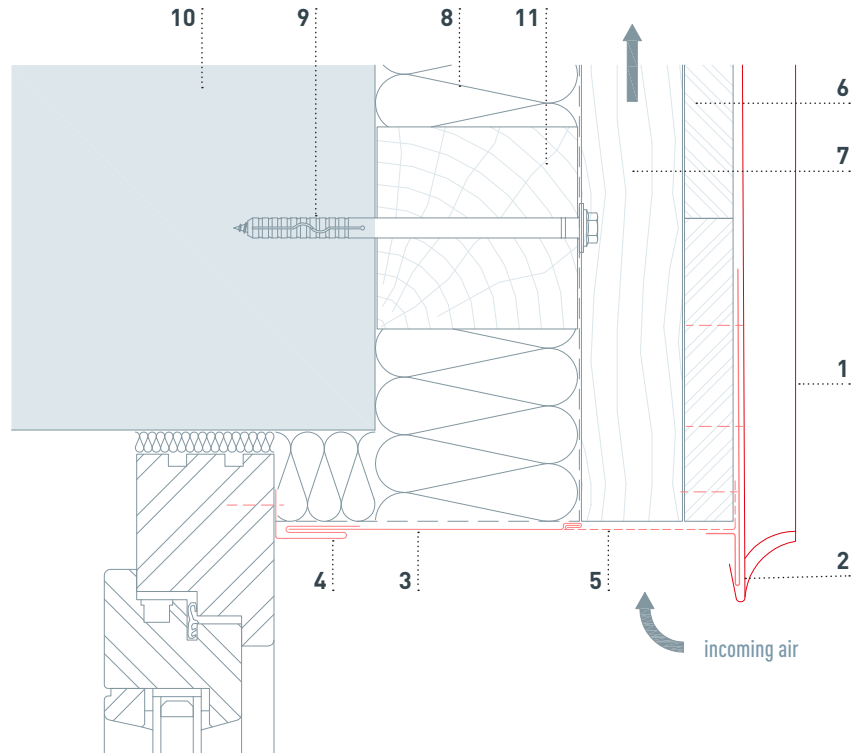
## WINDOW LEDGE

- 1 PREFALZ single lock standing seam
- 2 clip
- 3 continuous pre-formed supporting flashing strip
- 4 window ledge
- 5 perforated metal plate (canted)
- 6 fully boarded substrate (at least 24 mm)
- 7 counter batten
- 8 insulation
- 9 fastener driven into the supporting structure
- 10 supporting structure
- 11 nogging piece



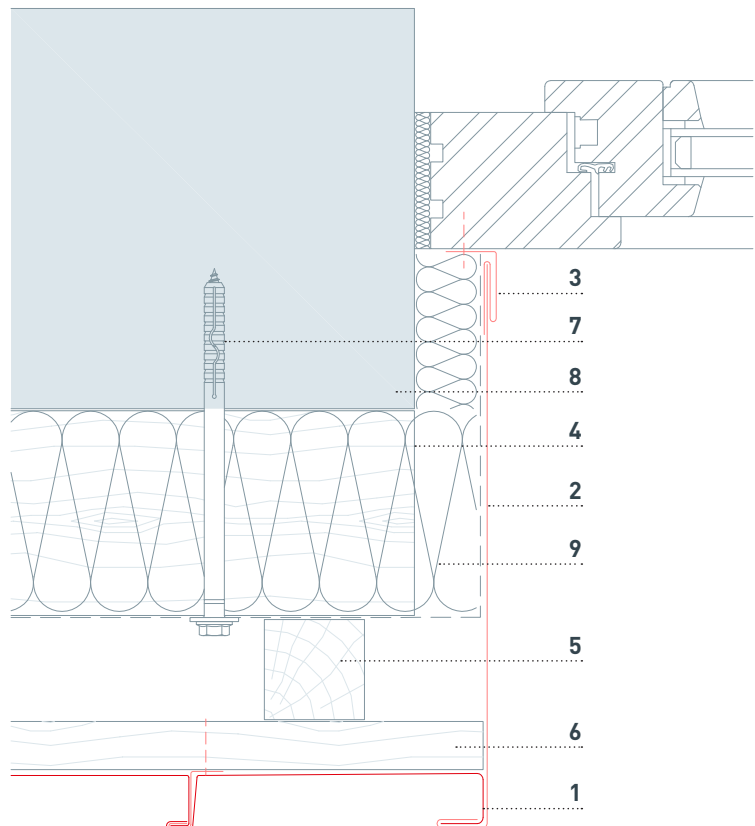
## WINDOW LINTEL

- 1 PREFALZ single lock standing seam
- 2 starter strip
- 3 cover flashing
- 4 insertion profile (PREFA)
- 5 perforated metal plate (canted)
- 6 fully boarded substrate (at least 24 mm)
- 7 counter batten
- 8 insulation
- 9 fastener driven into the supporting structure
- 10 supporting structure
- 11 nogging piece



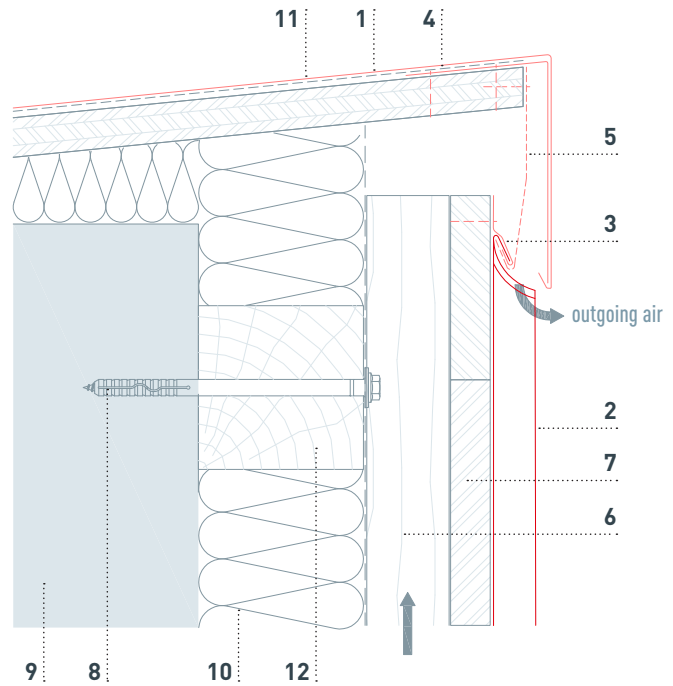
## WINDOW REVEAL

- 1 PREFALZ single lock standing seam
- 2 jamb flashing
- 3 insertion profile (PREFA)
- 4 nogging piece
- 5 counter batten
- 6 fully boarded substrate (at least 24 mm)
- 7 fastener driven into the supporting structure
- 8 supporting structure
- 9 insulation



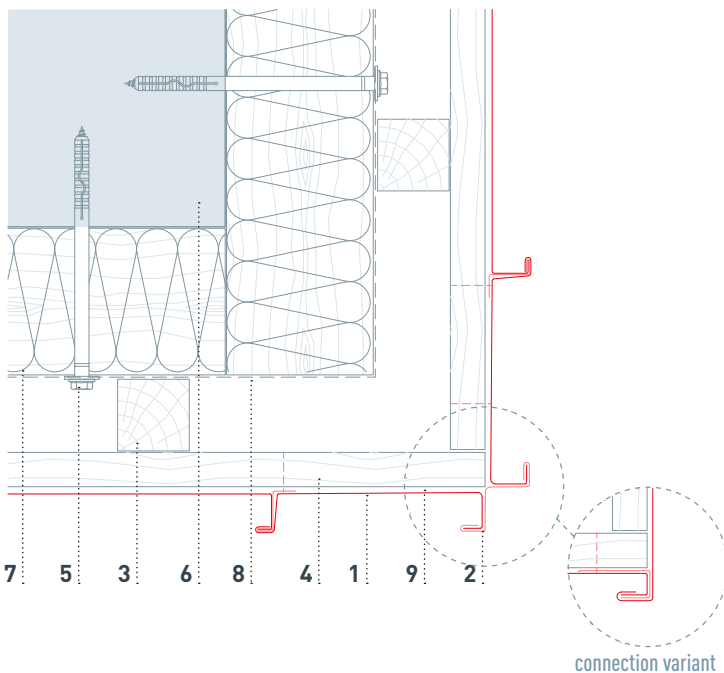
## TOP CONNECTION

- 1 roof parapet
- 2 PREFALZ single lock standing seam
- 3 clip
- 4 cleat strip
- 5 perforated metal plate (canted)
- 6 counter batten
- 7 fully boarded substrate (at least 24 mm)
- 8 fastener driven into the supporting structure
- 9 supporting structure
- 10 insulation
- 11 separation layer
- 12 nogging piece



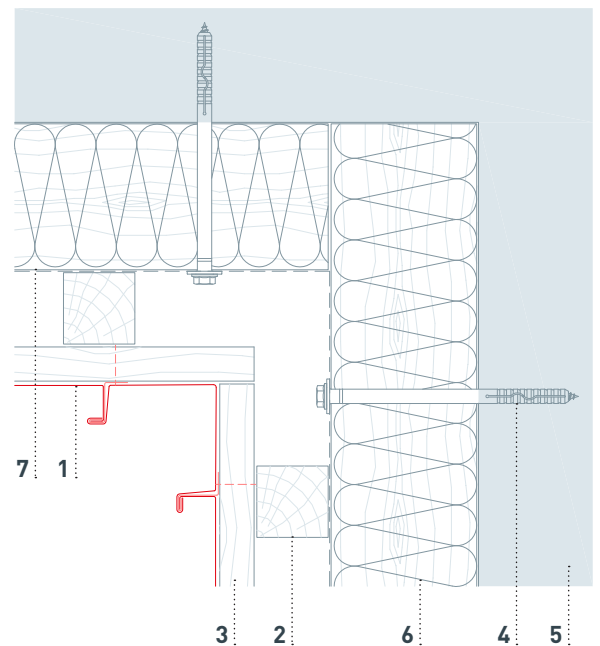
## EXTERNAL CORNER

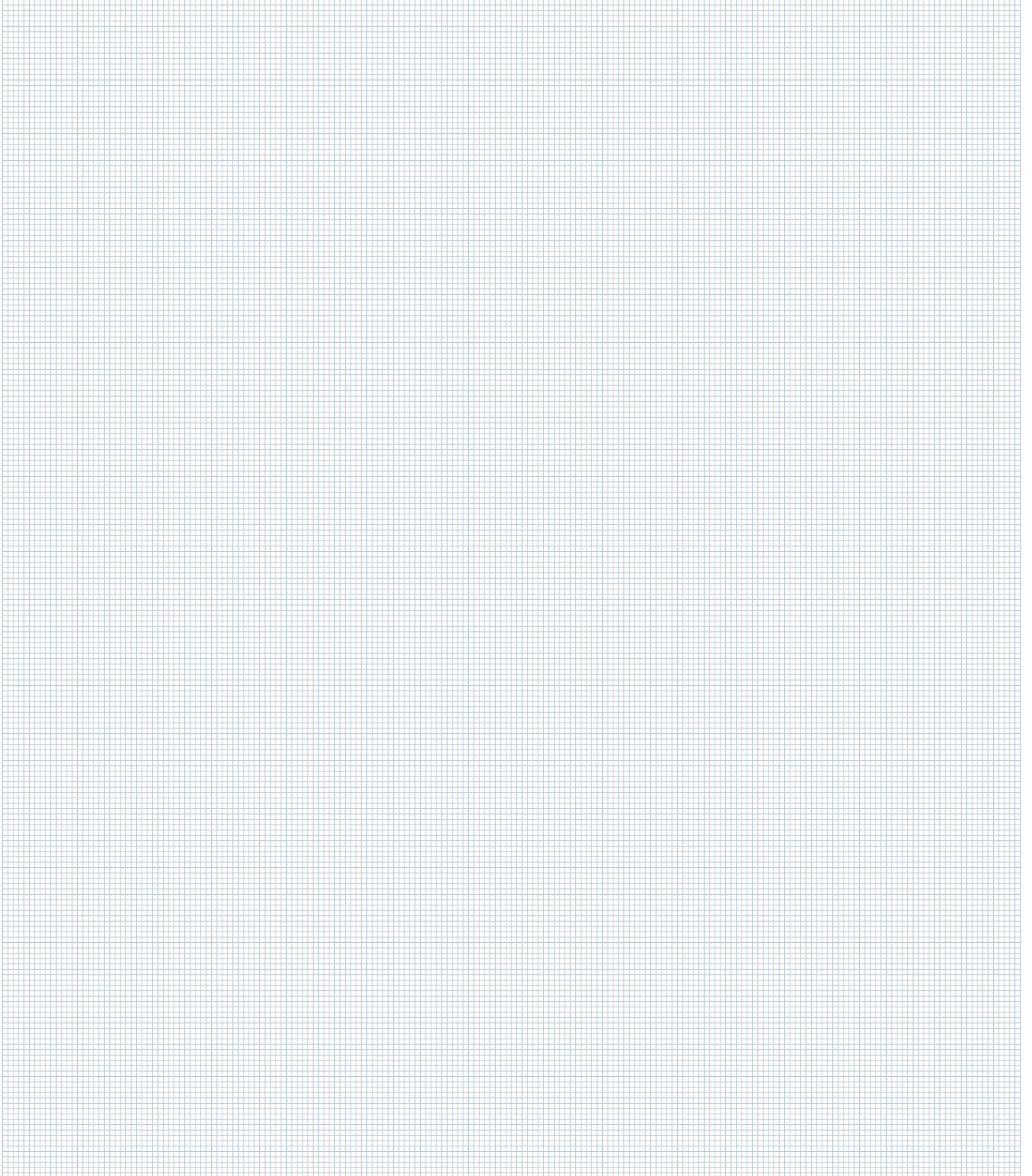
- 1 PREFALZ single lock standing seam
- 2 external corner (canted)
- 3 counter batten
- 4 fully boarded substrate (at least 24 mm)
- 5 fastener driven into the supporting structure
- 6 supporting structure
- 7 insulation
- 8 nogging piece
- 9 cleat strip



## INTERNAL CORNER

- 1 PREFALZ single lock standing seam
- 2 counter batten
- 3 fully boarded substrate (at least 24 mm)
- 4 fastener driven into the supporting structure
- 5 supporting structure
- 6 insulation
- 7 nogging piece







**THE ROOF  
AS STRONG AS A BULL**

# STRENGTH IS OUR PROMISE.

---

- Aluminium, the strong material for generations
- Perfectly coordinated complete systems
- Over 5,000 products in many colours and shapes
- 20-year guarantee on materials and 40-year guarantee on colours\*
- Personal, all-round service at every stage

**LET'S TALK ABOUT IT.**

## **PREFA UNITED KINGDOM AND REPUBLIC OF IRELAND**

**PREFA UK LTD**

24 Old Queen Street · London SW1H 9HP

T +44 20 7795 8124

[OFFICE.UK@PREFA.COM](mailto:OFFICE.UK@PREFA.COM)

[UK.PREFA.COM](http://UK.PREFA.COM)

### **LEGAL NOTICE**

Subject to technical modifications and printing errors.

Photos: PREFA | Croce & Wir

Printed colours may vary from the original material. 08/2022 | PFL

\* The colour guarantee ensures that the P.10 painted surface is protected from chips and blistering under the terms specified in the guarantee certificate. You can find more information about the material and colour guarantee at [uk.prefa.com/guarantee](http://uk.prefa.com/guarantee).